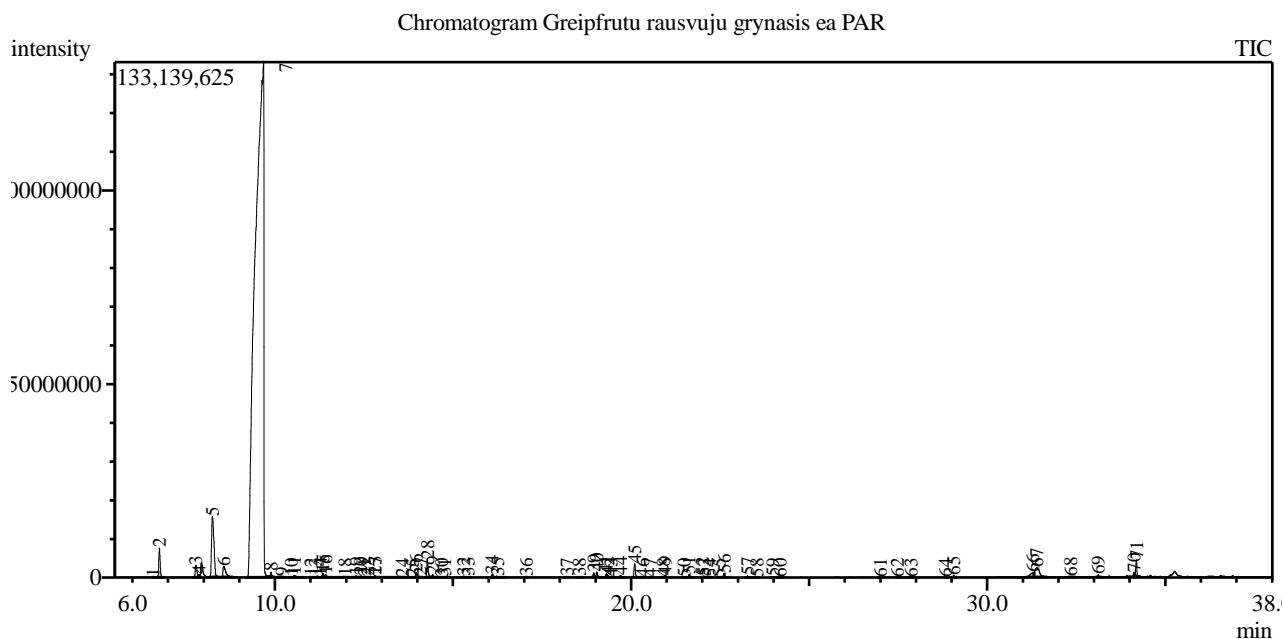


Analysis numb.: GC420  
 Analysis date: 2017 03 15  
 Sample name: Greipfrut rausv j grynasis ea  
 Botanical name: Citrus x paradisi (Pink Greipfruit)  
 Sample batch num: GFR22HPL  
 Sample origin: South Africa Republic  
 Best before: 2019 11



Peak Report TIC

Peak#	R.Time	Area	Area%	Name
1	6.577	103037	0.00	Thujene <alpha->
2	6.757	19339319	0.79	Pinene <alpha->
3	7.782	10360841	0.42	Sabinene
4	7.873	1436080	0.06	Pinene <beta->
5	8.245	73013366	2.99	Myrcene
6	8.561	14507134	0.59	Octanal
7	9.683	2210705852	90.45	Limonene*
8	9.890	2402791	0.10	Ocimene <trans-, beta->
9	10.192	567583	0.02	Terpinene <gamma->
10	10.462	162283	0.01	Sabinene hydrate <cis->
11	10.543	2260145	0.09	Octanol <n->
12	11.012	319976	0.01	Terpinolene
13	11.140	330370	0.01	
14	11.276	573211	0.02	Undecane
15	11.346	2835290	0.12	Linalool*
16	11.423	2502945	0.10	Nonanal
17	12.812	1569118	0.06	Menthatriene <1,3,8-para->
18	11.970	213654	0.01	Mentha-2,8-dien-1-ol <trans-, para->
19	12.282	977419	0.04	Limonene oxide <cis->
20	12.410	953239	0.04	Limonene oxide <trans->
21	12.516	281863	0.01	Myroxide <(E)->
22	12.615	328728	0.01	Camphor
23	12.814	1050124	0.04	Citronellal
24	13.576	180864	0.01	Terpinen-4-ol
25	13.863	99861	0.00	Cymen-8-ol <para->
26	13.966	3197919	0.13	Terpineol <alpha->
27	14.089	680242	0.03	Dodecane
28	14.283	12220733	0.50	Decanal
29	14.432	2106393	0.09	Acetate <octyl->

Peak#	R.Time	Area	Area%	Name
30	14.683	230458	0.01	
31	14.770	432385	0.02	Carveol <trans->
32	15.300	962392	0.04	Neral
33	15.415	566412	0.02	Carvone
34	16.101	2507261	0.10	Geranial
35	16.258	923253	0.04	Perillaldehyde
36	17.060	234258	0.01	Undecanal
37	18.208	314719	0.01	Elemene <delta->
38	18.547	407040	0.02	Neryl acetate
39	18.955	2891383	0.12	Copaene <alpha->
40	19.039	3900369	0.16	Geranyl acetate
41	19.308	2512323	0.10	Cubebene <beta->
42	19.352	488684	0.02	Elemene <beta->
43	19.433	194683	0.01	Tetradecane
44	19.703	1359731	0.06	Dodecanal
45	20.103	9530418	0.39	Caryophyllene
46	20.329	134648	0.01	Copaene <beta->
47	20.537	74304	0.00	Guaiene <alpha->
48	20.910	143279	0.01	Farnesene <(E), beta->
49	20.954	1184454	0.05	Humulene <alpha->
50	21.488	79022	0.00	Muurolene <gamma->
51	21.629	1865072	0.08	Germacrene D
52	22.006	717352	0.03	Bicyclgermacrene
53	22.063	230779	0.01	Muurolene <alpha->
54	22.212	217844	0.01	Bulnesene <alpha->
55	22.476	226278	0.01	Cubebol
56	22.615	2878056	0.12	Cadinene <delta->
57	23.270	1187932	0.05	Elemol <alpha->
58	23.534	218121	0.01	Nerolidol <(E)->
59	23.973	378609	0.02	Germacrene D-4-ol
60	24.181	210013	0.01	Caryophyllene oxide
61	27.000	258620	0.01	Sinensal <beta->
62	27.476	119546	0.00	Farnesol <(E,E)->**
63	27.859	132297	0.01	Farnesal <(E,E)->
64	28.830	114895	0.00	PYRIMETHANIL
65	29.058	1102053	0.05	Unknown
66	31.278	6859765	0.28	Auraptene
67	31.392	19920276	0.82	Auraptene
68	32.345	336025	0.01	Bergaptene
69	33.118	840111	0.03	Osthole
70	34.122	2804786	0.11	Unknown
71	34.193	9216466	0.38	Unknown
		2444186752	100.00	

Kosmetiniai alergenai: \*-silpnas, \*\*-vidutinio stiprumo, \*\*\*- stiprus alergenai

Analiz atliko

dr. Jurga B dien