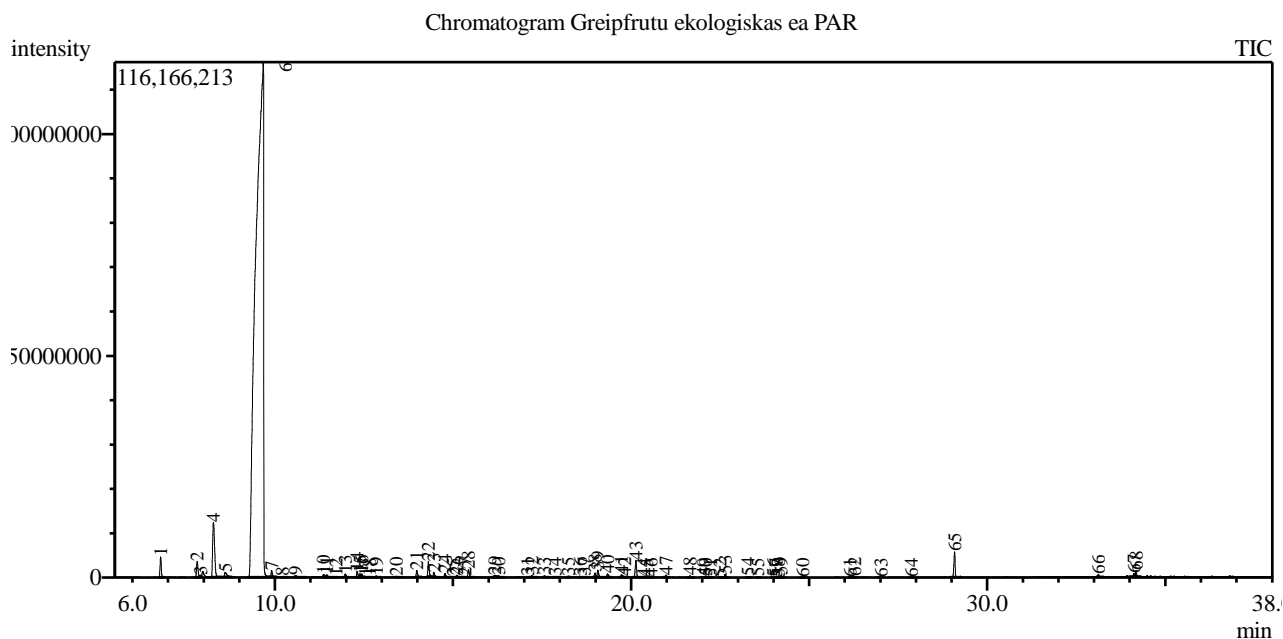


Analysis numb.: GC464
 Analysis date: 2017 05 03
 Sample name: Greipfrut ekologiškās ea
 Botanical name: Citrus x paradisi (White Grapefruit)
 Sample batch num: GRAO1216S
 Sample origin: South Africa Republic
 Best before: 2019 12



Peak Report TIC

Peak#	R.Time	Area	Area%	Name
1	6.791	10846302	0.57	Pinene <alpha->
2	7.817	10348904	0.54	Sabinene
3	7.909	1265761	0.07	Pinene <beta->
4	8.273	47634920	2.49	Myrcene
5	8.602	4804877	0.25	Octanal
6	9.671	1736786627	90.67	Limonene*
7	9.908	3047738	0.16	Ocimene <trans-, beta->
8	10.214	141325	0.01	Terpinene <gamma->
9	10.571	2008509	0.10	1-Octanol
10	11.368	1744836	0.09	Linalool*
11	11.458	1916582	0.10	Nonanal <n->
12	11.714	413984	0.02	Mentatriene <1,3,8-para->
13	11.977	1982273	0.10	Mentha-2,8-dien-1-ol <trans-, para->
14	12.311	3420664	0.18	Limonene oxide <cis->
15	12.389	1686742	0.09	Mentha-2,8-dien-1-ol <cis-, para->
16	12.438	1936817	0.10	Limonene oxide <trans->
17	12.543	308136	0.02	Myroxide <(E)->
18	12.648	355092	0.02	Camphor
19	12.846	781574	0.04	Citronellal
20	13.418	593556	0.03	Nonanol
21	13.984	4126014	0.22	Terpineol <alpha->
22	14.309	8035109	0.42	Decanal
23	14.461	3177942	0.17	Acetate <octyl->
24	14.773	2376755	0.12	Carveol <trans->
25	15.012	359790	0.02	Citronellol*
26	15.106	1395901	0.07	Carveol <cis->
27	15.339	389333	0.02	Neral
28	15.435	4485301	0.23	Carvone
29	16.173	2297354	0.12	Geranial

Peak#	R.Time	Area	Area%	Name
30	16.284	969246	0.05	Perillaldehyde
31	17.095	366963	0.02	Undecanal
32	17.213	1432509	0.07	(1S,4R)-p-Mentha-2,8-diene, 1-hydroperoxid
33	17.570	1128232	0.06	(1R,4R)-p-Mentha-2,8-diene, 1-hydroperoxic
34	17.866	680075	0.04	2-Isopropenyl-5-methylhex-4-enal
35	18.237	775937	0.04	Terpinyl acetate <alpha->
36	18.577	444454	0.02	Neryl acetate
37	18.677	889400	0.05	Unknown
38	18.988	2319842	0.12	Copaene <alpha->
39	19.070	4465724	0.23	Geranyl acetate
40	19.343	2449691	0.13	Cubebene <beta->
41	19.733	1693834	0.09	Dodecyl acetate
42	19.825	536036	0.03	Perillyl acetate
43	20.139	10250638	0.54	Caryophyllene
44	20.357	98245	0.01	Copaene <beta->
45	20.438	186326	0.01	Perillyl acetate
46	20.563	67663	0.00	Guaiene <alpha->
47	20.985	1415543	0.07	Humulene <alpha->
48	21.658	1036933	0.05	Unknown
49	22.033	334076	0.02	Bicyclogermacrene
50	22.092	220621	0.01	Muurolene <alpha->
51	22.238	201793	0.01	Bulnesene <alpha->
52	22.497	178828	0.01	Cubebol<10-epi->
53	22.643	1880062	0.10	Cadinene <delta->
54	23.286	649434	0.03	Elemol <alpha->
55	23.556	342291	0.02	Nerolidol <(E)->
56	23.993	189028	0.01	Germacrene D-4-ol
57	24.063	208187	0.01	Spathulenol
58	24.137	219528	0.01	Caryophyllene oxide
59	24.208	1036212	0.05	Caryophyllene oxide
60	24.821	116364	0.01	Tetradecanal
61	26.151	96895	0.01	Intermedeol<neo->
62	26.274	475391	0.02	Intermedeol
63	27.021	167213	0.01	Sinensal <beta->
64	27.877	106714	0.01	Farnesal <(E,E)->
65	29.085	13699327	0.72	Nootkatone
66	33.123	1073429	0.06	Ostole
67	34.120	1752727	0.09	Unknown
68	34.181	2736059	0.14	Unknown
		1915560188	100.00	

Kosmetiniai alergenai: *-silpnas, **-vidutinio stiprumo, ***- stiprus alergenai

Analiz atliko

dr. Jurga B dien