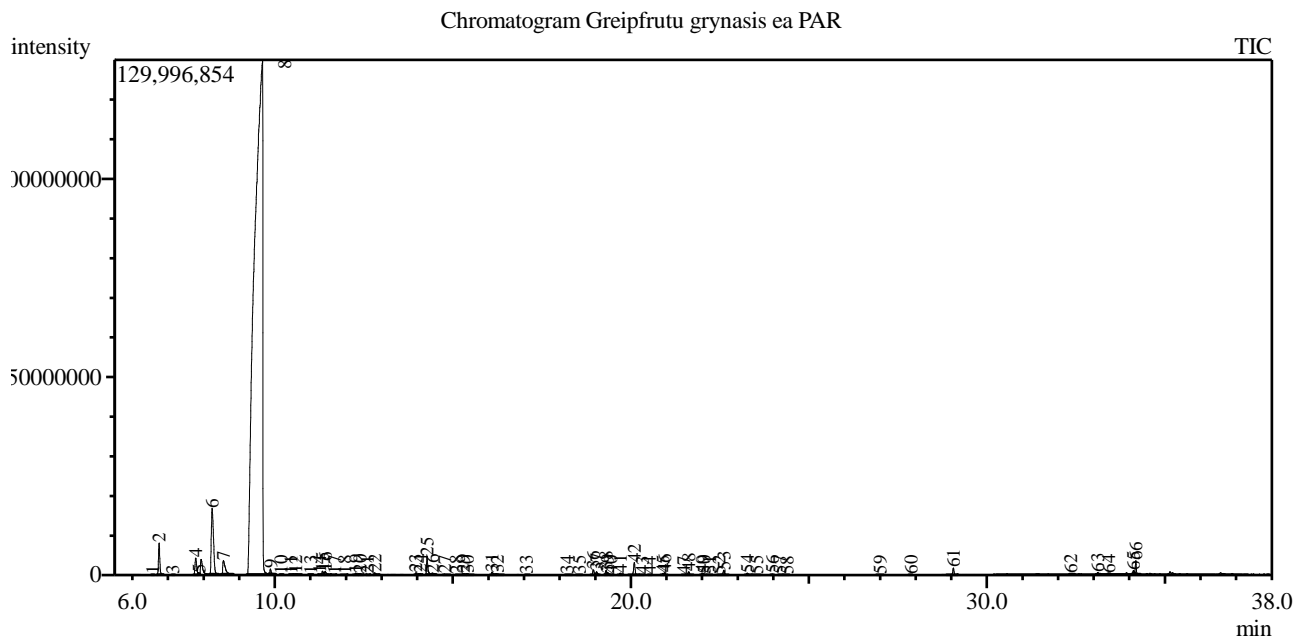


Analysis numb.: GC419
 Analysis date: 2017 03 15
 Sample name: Greipfrut grynasis ea
 Botanical name: Citrus x paradisi (White Grapefruit)
 Sample batch num: 02946/04LET
 Sample origin: South Africa Republic
 Best before: 2019 11



Peak Report TIC

Peak#	R.Time	Area	Area%	Name
1	6.571	88422	0.00	Thujene <alpha->
2	6.751	19929766	0.88	Pinene <alpha->
3	7.132	89561	0.00	Camphene
4	7.777	13367216	0.59	Sabinene
5	7.867	148842	0.01	Pinene <beta->
6	8.239	71271997	3.14	Myrcene
7	8.558	16227698	0.72	Octanal
8	9.657	2066357335	91.18	Limonene*
9	9.878	2788555	0.12	Ocimene <trans-, beta->
10	10.182	95820	0.00	Terpinene <gamma->
11	10.456	153395	0.01	Sabinene hydrate <cis->
12	10.593	499315	0.02	Octanol <n->
13	11.008	274275	0.01	Terpinolene
14	11.268	347296	0.02	Undecane
15	11.340	2256271	0.10	Linalool*
16	11.415	2803523	0.12	Nonanal
17	11.678	379370	0.02	Menthatriene <1,3,8- para->
18	11.967	321439	0.01	Mentha-2,8-dien-1-ol <trans-, para->
19	12.275	1084254	0.05	Limonene oxide <cis->
20	12.402	1058608	0.05	Limonene oxide <trans->
21	12.606	241235	0.01	Camphor
22	12.808	1224566	0.05	Citronellal
23	13.966	1247462	0.06	Terpineol <alpha->
24	14.086	803108	0.04	Dodecane

Peak#	R.Time	Area	Area%	Name
25	14.274	12071319	0.53	Decanal
26	14.433	803090	0.04	Acetate <octyl->
27	14.771	374459	0.02	Carveol <trans->
28	15.100	57270	0.00	Carveol <cis->
29	15.300	955681	0.04	Neral
30	15.412	839327	0.04	Carvone
31	16.101	2363078	0.10	Geranial
32	16.255	768845	0.03	Perillaldehyde
33	17.064	266697	0.01	Undecanal <n->
34	18.210	478312	0.02	Terpinyl acetate <alpha->
35	18.550	234261	0.01	Neryl acetate
36	18.952	3184798	0.14	Copaene <alpha->
37	19.039	2126628	0.09	Geranyl acetate
38	19.304	2807100	0.12	Cubebene <beta->
39	19.348	526749	0.02	Elemene <beta->
40	19.434	276852	0.01	Tetradecane
41	19.703	1172530	0.05	Dodecanal
42	20.099	8423688	0.37	Caryophyllene
43	20.325	133205	0.01	Copaene <beta->
44	20.526	81406	0.00	Guaiene <alpha->
45	20.900	328007	0.01	Farnesene <(E)-, beta->
46	20.950	1236997	0.05	Humulene <alpha->
47	21.484	76881	0.00	Muurolene <gamma->
48	21.628	2043948	0.09	Germacrene D
49	22.003	774684	0.03	Bicyclgermacrene
50	22.060	257354	0.01	Muurolene <alpha->
51	22.212	198205	0.01	Bulnesene <alpha->
52	22.475	275064	0.01	Cubebol
53	22.613	3180925	0.14	Cadinene <delta->
54	23.271	1343117	0.06	Elemol <alpha->
55	23.536	228965	0.01	Nerolidol <(E)->
56	23.971	349045	0.02	germacrene D-4-ol
57	24.179	202217	0.01	Caryophyllene oxide
58	24.384	160894	0.01	Pentadecane
59	27.004	447379	0.02	Sinensal <beta->
60	27.863	129808	0.01	Farnesal <(E,E)->
61	29.060	3790102	0.17	Nootkatone
62	32.349	394742	0.02	Bergaptene
63	33.117	711266	0.03	Ostole
64	33.425	426802	0.02	Butyl palmitate
65	34.116	1853677	0.08	Unknown
66	34.186	6797032	0.30	Unknown
		2266211735	100.00	

Kosmetiniai alergenai: *-silpnas, **-vidutinio stiprumo, ***- stiprus alergenai

Analiz atliko

dr. Jurga B dien