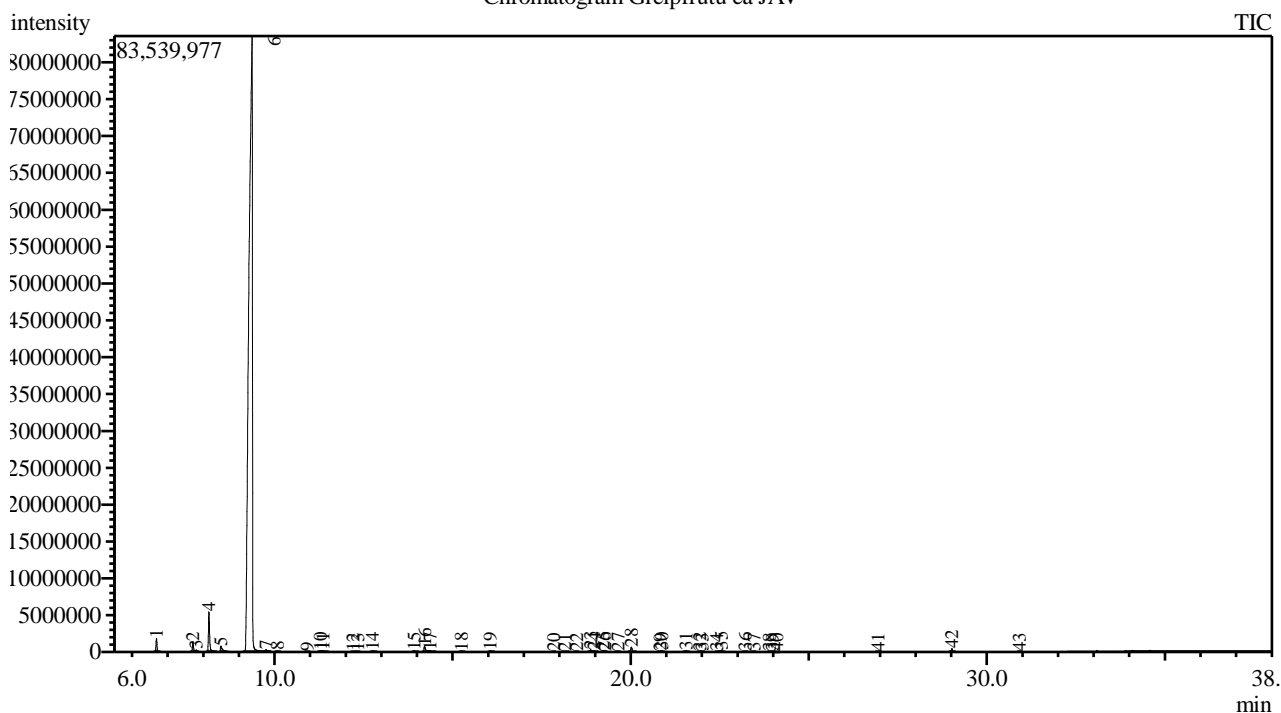


Analysis numb.: GC958
 Analysis date: 2020 08 31
 Sample name: Greipfrutu ea
 Botanical name: Citrus x paradisi
 Sample batch num: LOT 0028344
 Sample origin: JAV
 Best before: 2021 08

Chromatogram Greipfrutu ea JAV



Peak Report TIC

Peak#	R.Time	Area	Area%	Name
1	6.685	3488923	0.59	Pinene <alpha->
2	7.709	2849235	0.48	Sabinene
3	7.800	526312	0.09	Pinene <beta->
4	8.158	12546838	2.11	Myrcene
5	8.493	2381826	0.40	Octanal
6	9.370	561473636	94.37	Limonene*
7	9.765	555081	0.09	Ocimene <trans-, beta->
8	10.077	170984	0.03	Terpinene <gamma->
9	10.914	67601	0.01	Terpinolene
10	11.280	451527	0.08	Linalool*
11	11.367	328414	0.06	Nonanal
12	12.206	57210	0.01	Linalool oxide <cis->
13	12.338	82628	0.01	Linalool oxide <trans->
14	12.746	277087	0.05	Citronellal
15	13.921	291836	0.05	Terpineol <alpha->
16	14.212	2076603	0.35	Decanal
17	14.368	379215	0.06	Acetate <octyl->
18	15.249	154499	0.03	Neral
19	16.059	329465	0.06	Geranial
20	17.836	49831	0.01	Elemene <delta->
21	18.149	150800	0.03	Terpinyl acetate <alpha-> + Cubebene <alpha->
22	18.480	60011	0.01	Neryl acetate
23	18.877	590369	0.10	Copaene <alpha->
24	18.969	350064	0.06	Geranyl acetate

Peak#	R.Time	Area	Area%	Name
25	19.229	448076	0.08	Cubebene <beta->
26	19.277	139533	0.02	Elemene <beta->
27	19.641	184800	0.03	Dodecanal
28	20.021	1656063	0.28	Caryophyllene <(E)->
29	20.827	54013	0.01	Farnesene <(E)-, beta->
30	20.878	228981	0.04	Humulene <alpha->
31	21.556	407340	0.07	Germacrene D
32	21.933	117158	0.02	Bicyclogermacrene
33	22.003	53377	0.01	Muurolene <alpha->
34	22.417	38996	0.01	Cubenol
35	22.546	520319	0.09	Cadinene <delta->
36	23.210	167055	0.03	Elemol <alpha->
37	23.460	45928	0.01	Nerolidol <(E)->
38	23.897	44609	0.01	Germacrene D-4-ol
39	23.986	12829	0.00	Spathulenol
40	24.102	76504	0.01	Caryophyllene oxide
41	26.947	77595	0.01	Sinensal <beta->
42	29.020	948394	0.16	Nootkatone
43	30.912	41728	0.01	Camphorene <m->
		594953293	100.00	

Kosmetiniai alergenai: *-silpnas, **-vidutinio stiprumo, ***- stiprus alergenai

Analiz atliko

dr. Jurga B dien