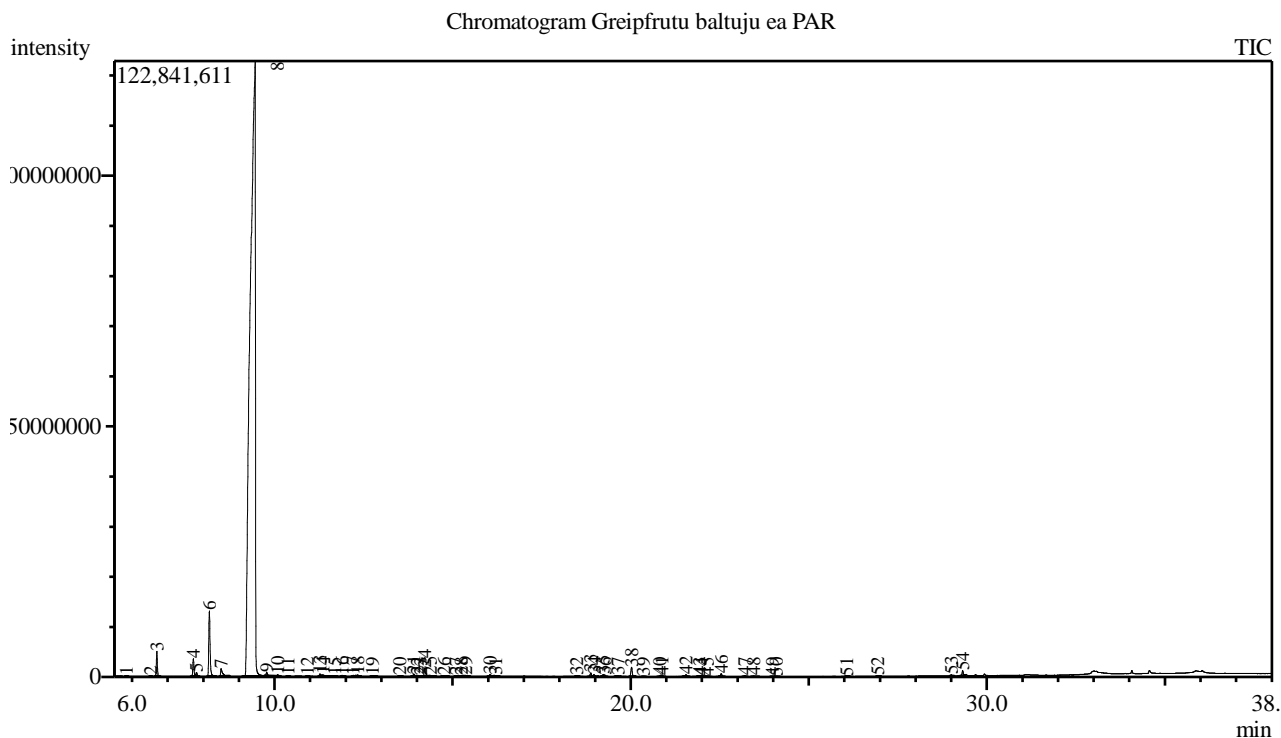


Analysis numb.: GC852
 Analysis date: 2020 02 12
 Sample name: Greipfrut ea (White)
 Botanical name: Citrus x paradisi
 Sample batch num: GRM220219LET0645
 Sample origin: PAR
 Best before: 2021 02



Peak Report TIC

Peak#	R.Time	Area	Area%	Name
1	5.834	102882	0.01	Nonane
2	6.519	118531	0.01	Thujene <alpha->
3	6.696	10111691	0.76	Pinene <alpha->
4	7.720	8082569	0.61	Sabinene
5	7.808	1778298	0.13	Pinene <beta->
6	8.170	33817795	2.54	Myrcene
7	8.497	5605283	0.42	Octanal
8	9.456	1233634978	92.64	Limonene*
9	9.780	1877621	0.14	Ocimene <trans-, beta->
10	10.089	662563	0.05	Terpinene <gamma->
11	10.375	100783	0.01	Sabinene hydrate <cis->
12	10.924	116646	0.01	Terpinolene
13	11.276	1366858	0.10	Linalool*
14	11.363	1310192	0.10	Nonanal
15	11.691	193754	0.01	Unknown
16	11.898	588675	0.04	Mentha-2,8-dien-1-ol <trans-, para->
17	12.212	603409	0.05	Limonene oxide <cis->
18	12.334	982173	0.07	Limonene oxide <trans->
19	12.753	520248	0.04	Citronellal
20	13.517	157568	0.01	Unknown
21	13.909	1329178	0.10	Terpineol <alpha->
22	14.007	280104	0.02	Myrtenal
23	14.102	176322	0.01	Myrtenol
24	14.213	4869823	0.37	Decanal

Peak#	R.Time	Area	Area%	Name
25	14.373	771391	0.06	Acetate <octyl->
26	14.759	657118	0.05	Carveol <trans->
27	15.099	369379	0.03	Carveol <cis->
28	15.248	485835	0.04	Neral
29	15.360	729154	0.05	Carvone
30	16.049	1265330	0.10	Geranial
31	16.213	336308	0.03	Perillaldehyde
32	18.480	186083	0.01	Neryl acetate
33	18.881	1804479	0.14	Copaene <alpha->
34	18.973	1220909	0.09	Geranyl acetate
35	19.232	1016591	0.08	Cubebene <beta->
36	19.279	341871	0.03	Elemene <beta->
37	19.641	480418	0.04	Dodecanal
38	20.026	4755191	0.36	Caryophyllene <(E)->
39	20.356	78010	0.01	Bergamotene <alpha-, trans->
40	20.823	145883	0.01	Farnesene <(E)-, beta->
41	20.880	721215	0.05	Humulene <alpha->
42	21.555	965695	0.07	Germacrene D
43	21.930	219170	0.02	Bicyclogermacrene
44	22.000	102910	0.01	Muurolene <alpha->
45	22.149	123172	0.01	Bisabolene <beta->
46	22.544	1498789	0.11	Cadinene <delta->
47	23.204	521530	0.04	Elemol <alpha->
48	23.453	391959	0.03	Nerolidol <(E)->
49	23.973	134821	0.01	Spathulenol
50	24.095	240763	0.02	Caryophyllene oxide
51	26.070	205993	0.02	Pogostol
52	26.941	219009	0.02	Sinensal <beta->
53	29.006	600136	0.05	Nootkatone
54	29.322	2682961	0.20	Neophytadiene
		1331660017	100.00	

Kosmetiniai alergenai: *-silpnas, **-vidutinio stiprumo, ***- stiprus alergenai

Analiz atliko

dr. Jurga B dien