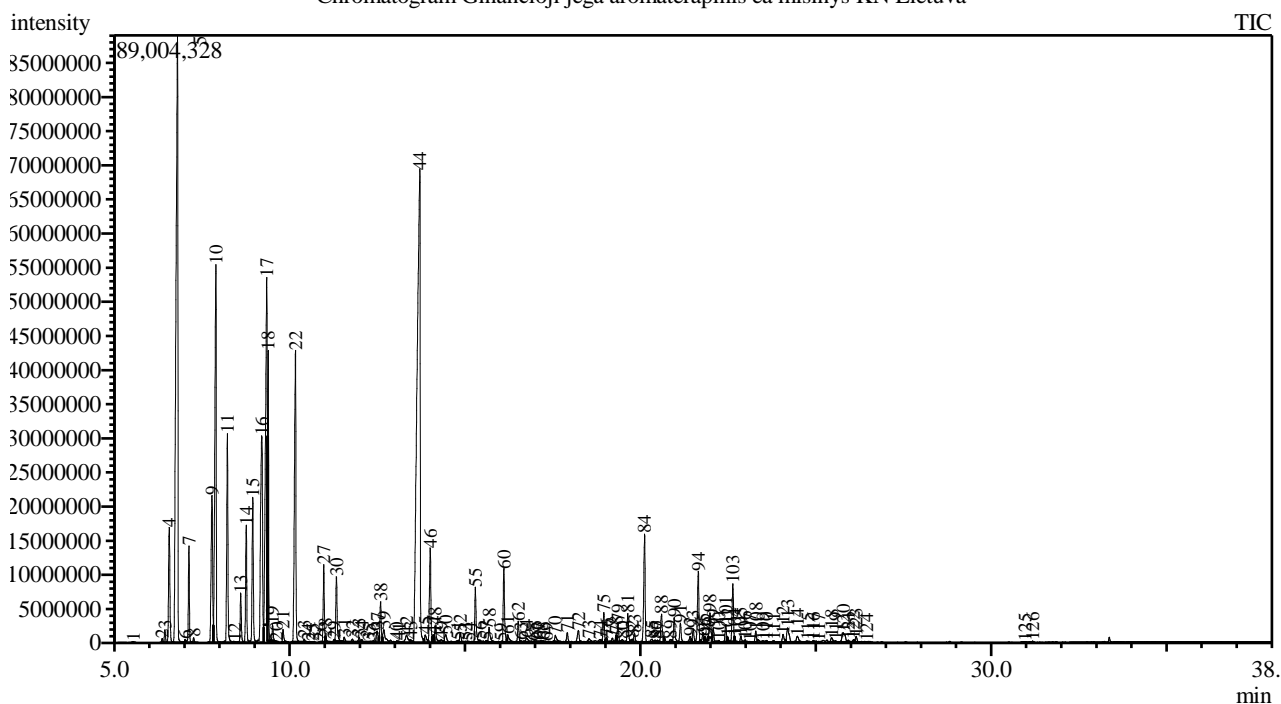


Analysis numb.: GC761
 Analysis date: 2019 10 02
 Sample name: Ginan ioji j ga aromatinis ea mišinys
 Botanical name:
 Sample batch num: PN19RU28
 Sample origin: Lietuva
 Best before: 2021 09

Chromatogram Ginancioji jega aromaterapinis ea misinys KN Lietuva



Peak Report TIC

Peak#	R.Time	Area	Area%	Name
1	5.547	220389	0.01	Santene
2	6.365	1330415	0.06	Unknown
3	6.442	4118257	0.18	Tricyclene
4	6.568	44897629	1.94	Thujene <alpha->
5	6.804	337350645	14.61	Pinene <alpha->
6	7.019	1021697	0.04	Thuja-2,4(10)-diene
7	7.130	28110053	1.22	Camphene
8	7.265	1476957	0.06	Thuja-2,4(10)-diene
9	7.787	64468929	2.79	Sabinene
10	7.898	154966345	6.71	Pinene <beta->
11	8.226	71657569	3.10	Myrcene
12	8.435	666230	0.03	Decane
13	8.606	17037957	0.74	Phellandrene <alpha->
14	8.764	38849601	1.68	Carene <delta-3->
15	8.950	50729506	2.20	Terpinene <alpha->
16	9.207	118820193	5.15	Cymene <para->
17	9.346	172638711	7.48	Limonene*
18	9.389	73251213	3.17	Eucalyptol
19	9.515	5230581	0.23	Ocimene <cis-, beta->
20	9.620	83528	0.00	Heptyl acetate <2->
21	9.813	5046865	0.22	Ocimene <trans-, beta->
22	10.166	126538807	5.48	Terpinene <gamma->
23	10.416	1057918	0.05	Sabinene hydrate <cis->
24	10.533	374027	0.02	Linalool oxide <cis->

Peak#	R.Time	Area	Area%	Name
25	10.655	137905	0.01	Rose oxide <trans-, dihydro-> + Camphenilo
26	10.876	276951	0.01	Linalool oxide <trans->
27	10.973	25232291	1.09	Terpinolene
28	11.020	1676249	0.07	Cymenene <para->
29	11.265	709478	0.03	Pinene oxide <alpha->
30	11.334	25694604	1.11	Linalool*
31	11.556	1809735	0.08	Unknown
32	11.791	1471164	0.06	Thujone <alpha->
33	11.980	2343866	0.10	Menth-2-en-1-ol <cis-, para->
34	12.059	1378909	0.06	Campholenal <alpha->
35	12.259	79740	0.00	Limonene oxide <cis->
36	12.393	670698	0.03	Nopinone + Menth-2en-1-ol <trans-, para->
37	12.493	6053295	0.26	Pinocarveol <trans->
38	12.594	15448979	0.67	Camphor
39	12.687	9233732	0.40	2-Caren-4-ol <trans->
40	13.057	956703	0.04	Pinocamphone <trans->
41	13.119	1090552	0.05	Pinocarvone
42	13.332	6076789	0.26	Borneol
43	13.456	1333939	0.06	Pinocarveol <trans->
44	13.711	426921678	18.49	Terpinen-4-ol
45	13.867	4496760	0.19	Cymen-8-ol <para-> + Cryptone
46	14.009	38010673	1.65	Terpineol <alpha->
47	14.094	3112822	0.13	Myrtenal
48	14.150	7722461	0.33	Estragole
49	14.323	2288548	0.10	Terpineol <gamma-> + Unknown
50	14.452	5483033	0.24	Verbenone + Piperitol <trans->
51	14.785	1148374	0.05	Carveol <trans->
52	14.866	4400742	0.19	Decyl <methyl-> ether
53	15.012	935675	0.04	Citronellol*
54	15.118	1004270	0.04	Thymol methyl ether
55	15.297	22319614	0.97	Neral
56	15.429	1435029	0.06	Carvone
57	15.607	1355516	0.06	Unknown
58	15.687	9003150	0.39	Geraniol*
59	16.027	580324	0.03	3,5-Dimethoxytoluene
60	16.109	29020370	1.26	Geranial
61	16.220	5524980	0.24	Ascaridol glycol <trans->
62	16.520	7973389	0.35	Isobornyl acetate
63	16.596	927412	0.04	Anethole <(E)->
64	16.754	3962585	0.17	Ascaridol glycol <trans->
65	16.933	635093	0.03	Thymol
66	17.001	1608049	0.07	Bornyl acetate + Unknown
67	17.108	1114235	0.05	Unknown
68	17.225	1275690	0.06	Carvacrol + Acetophenone <3'-methoxy->
69	17.313	808767	0.04	Terpinen-4-ol acetate
70	17.574	3315432	0.14	Unknown
71	17.917	4865746	0.21	Elemene <delta->
72	18.234	6299806	0.27	Cubebene <alpha->
73	18.534	3607452	0.16	Unknown
74	18.845	1933613	0.08	Ylangene <alpha->
75	18.959	12313520	0.53	Copaene <alpha->
76	19.038	2511294	0.11	Geranyl acetate
77	19.203	2093707	0.09	Bourbonene <beta->
78	19.305	2418902	0.10	Cubebene <beta->
79	19.362	6852320	0.30	Elemene <beta->
80	19.490	2153966	0.09	Unknown
81	19.641	11716490	0.51	Methyleugenol
82	19.769	1526237	0.07	Longifolene
83	19.832	3967994	0.17	Gurjunene <alpha->
84	20.121	44884913	1.94	Caryophyllene <(E)->
85	20.331	2077538	0.09	Copaene <beta->
86	20.424	1330558	0.06	Bergamotene <alpha-, trans->
87	20.492	1019076	0.04	Maaliene <alpha->
88	20.604	13541826	0.59	Aromadendrene
89	20.857	1995125	0.09	Muurola-3,5-diene <trans->
90	20.965	10956133	0.47	Humulene <alpha->
91	21.142	8346465	0.36	Alloaromadendrene
92	21.420	2924125	0.13	Cadina-1(6),4-diene <trans->
93	21.508	5804438	0.25	Muurolene <gamma->

Peak#	R.Time	Area	Area%	Name
94	21.653	29808295	1.29	Germacrene D
95	21.786	4888037	0.21	Selinene <beta->
96	21.842	2441795	0.11	Guaiene <cis-beta->
97	21.933	912824	0.04	Amorphene <gamma->
98	21.984	10491657	0.45	Viridiflorene
99	22.078	5542008	0.24	Muurolene <alpha->
100	22.236	1777785	0.08	Amorphene <delta->
101	22.436	6977175	0.30	Cadinene <gamma->
102	22.490	1662704	0.07	Cubebol
103	22.636	23378806	1.01	Cadinene <delta->
104	22.693	1429170	0.06	Zonarene
105	22.867	2910693	0.13	Cadina-1,4-diene <trans->
106	22.988	1396909	0.06	Cadinene <alpha->
107	23.125	628346	0.03	Calacorene <alfa->
108	23.291	4869320	0.21	Elemol <alpha->
109	23.494	1055467	0.05	Germacrene B
110	23.599	999122	0.04	Hexenyl benzoate <(3Z)-> + Maaliol
111	23.805	1705628	0.07	Palustrol
112	24.070	4716590	0.20	Spathulenol
113	24.196	9912806	0.43	Caryophyllene oxide
114	24.477	4790015	0.21	Viridiflorol
115	24.771	1182236	0.05	Rosifoliol + Ledol
116	24.937	1649495	0.07	Humulene epoxide II
117	25.082	793972	0.03	Cubenol <1,10-di-epi->
118	25.454	2833101	0.12	Epicubenol
119	25.569	778266	0.03	Eudesmol <gamma->
120	25.780	8902264	0.39	T-Muurolol + Aromadendrene epoxide <allo-
121	25.929	1116085	0.05	Muurolol <alpha->
122	26.076	1313999	0.06	Eudesmol <beta->
123	26.153	3420505	0.15	Cadinol <alpha->
124	26.447	324492	0.01	Calamenen-10-ol <cis->
125	30.967	237729	0.01	Camphorene <m->
126	31.185	399343	0.02	Neocembrene
		2308392155	100.00	

Kosmetiniai alergenai: *-silpnas, **-vidutinio stiprumo, ***- stiprus alergenai

Analiz atliko

dr. Jurga B dien