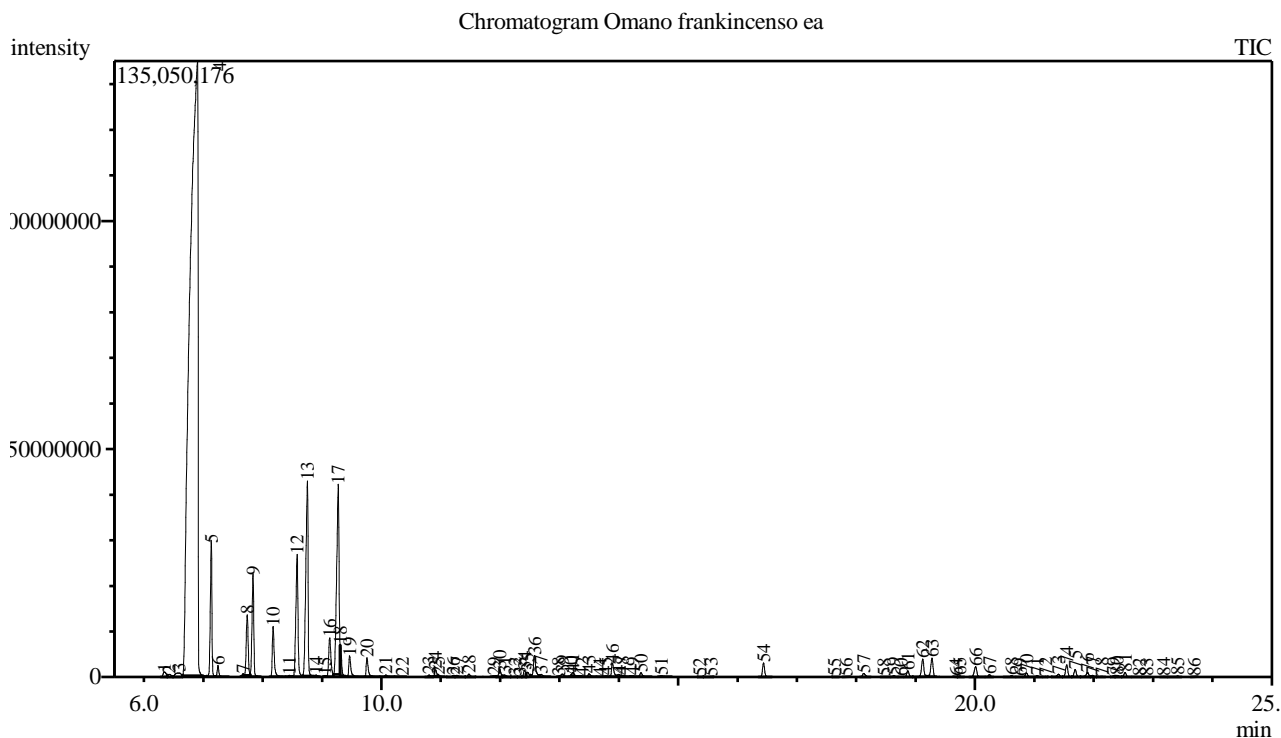


Analysis numb.: GC860
 Analysis date: 2020 02 24
 Sample name: Omano frankincenso ea
 Botanical name: Boswellia sacra
 Sample batch num: 2020-02-12
 Sample origin: Omanas
 Best before:



Peak Report TIC

Peak#	R.Time	Area	Area%	Name
1	6.345	3841201	0.20	Unknown
2	6.424	2148975	0.11	Tricyclene
3	6.590	5849128	0.30	Thujene <alpha->
4	6.904	1265642924	65.36	Pinene <alpha->
5	7.135	56106320	2.90	Camphene
6	7.249	4985549	0.26	Thuja-2,4(10)-diene
7	7.668	1041847	0.05	Verbenene
8	7.740	29685503	1.53	Sabinene
9	7.839	46585322	2.41	Pinene <alpha->
10	8.178	25003314	1.29	Myrcene
11	8.451	931921	0.05	Carene <delta-2->
12	8.583	68313694	3.53	Phellandrene <alpha->
13	8.754	112904243	5.83	Carene <delta-3->
14	8.901	618698	0.03	Terpinene <alpha->
15	9.044	308114	0.02	Menth-1-ene <para->
16	9.131	22967062	1.19	Cymene <para->
17	9.274	119942471	6.19	Limonene*
18	9.312	9613302	0.50	Eucalyptol
19	9.466	11497079	0.59	Ocimene <cis-, beta->
20	9.759	10174527	0.53	Ocimene <trans-, beta->
21	10.078	1294910	0.07	Terpinene <gamma->
22	10.355	204659	0.01	Sabinene hydrate <cis->
23	10.806	1357712	0.07	Linalool oxide <trans-> + Mentha-2,4(8)-diene
24	10.913	3274526	0.17	Terpinolene

Peak#	R.Time	Area	Area%	Name
25	10.960	645351	0.03	Cymenene <para-> + Camphenone <6->
26	11.211	828680	0.04	Pinene oxide <alpha->
27	11.271	1381830	0.07	Linalool*
28	11.476	1728768	0.09	Pinene oxide <alpha->
29	11.900	508418	0.03	Unknown
30	11.995	4432076	0.23	Campholenal <alpha->
31	12.076	1474381	0.08	Alloocimene + Unknown
32	12.254	503264	0.03	Limonene oxide <cis->
33	12.336	296961	0.02	Limonene oxide ,trans->
34	12.414	3470033	0.18	Pinocarveol <trans->
35	12.464	2981115	0.15	Verbenol <cis->
36	12.582	13422914	0.69	Verbenol <trans->
37	12.693	1993815	0.10	Mentha-1,5-dien-8-ol <para->
38	12.990	127255	0.01	Pinocamphone <trans->
39	13.045	1779228	0.09	Pinocarvone + Unknown
40	13.200	298519	0.02	Borneol
41	13.224	2753492	0.14	Mentha-1,5-dien-8-ol <para->
42	13.380	22775	0.00	Pinocamphone <cis->
43	13.500	2126718	0.11	Terpinen-4-ol
44	13.682	269968	0.01	Cymen-8-ol <meta->
45	13.781	833510	0.04	Cymen-8-ol <para->
46	13.895	7979743	0.41	Terpineol <alpha->
47	14.001	1580696	0.08	Myrtenal
48	14.063	1543993	0.08	Myrtenol
49	14.235	853438	0.04	Sabinol <trans->
50	14.374	2506209	0.13	Verbenone
51	14.719	915724	0.05	Carveol <trans->
52	15.361	145330	0.01	Carvone
53	15.556	499510	0.03	Carvotanacetone + Linalyl acetate
54	16.440	7545973	0.39	Bornyl acetate
55	17.632	133278	0.01	Verbenyl acetate <trans->
56	17.833	120919	0.01	Elemene <delta->
57	18.127	2400283	0.12	Terpinyl acetate <alpha->
58	18.467	182103	0.01	Eugenol*
59	18.635	706046	0.04	Cyclosativene
60	18.752	101656	0.01	Ylangene <alpha->
61	18.872	3372253	0.17	Copaene <alpha->
62	19.122	11399315	0.59	Bourbonene <beta->
63	19.278	10771938	0.56	Elemene <beta->
64	19.678	156014	0.01	Caryophyllene <(Z)->
65	19.745	503530	0.03	Gurjunene <alpha->
66	20.013	6900640	0.36	Caryophyllene <(E)->
67	20.245	1295192	0.07	Copaene <beta->
68	20.618	777386	0.04	Isogermacrene D
69	20.767	121092	0.01	Muurola-3,5-diene <cis->
70	20.870	2384940	0.12	Humulene <alpha->
71	21.048	793432	0.04	Alloaromadendrene
72	21.188	311556	0.02	Muurola-4(14),5-diene <cis->
73	21.409	1942789	0.10	Murolene <gamma->
74	21.547	7184224	0.37	Germacrene D
75	21.690	4402683	0.23	Selinene <beta->
76	21.898	3239022	0.17	Selinene <alpha->
77	21.983	1044343	0.05	Murolene <alpha->
78	22.137	624384	0.03	Bulnesene <alpha->
79	22.333	641744	0.03	Cadinene <gamma->
80	22.392	1244322	0.06	Cubebol
81	22.531	2661883	0.14	Cadinene <delta->
82	22.768	124253	0.01	Cadina-1,4-diene <trans->
83	22.892	109061	0.01	Cadinene <alpha->
84	23.182	323012	0.02	Elemol <alpha->
85	23.415	558492	0.03	Dihydroagarofuran <beta->
86	23.693	65709	0.00	Palustrol
		1936340182	100.00	

Kosmetiniai alergenai: *-silpnas, **-vidutinio stiprumo, ***- stiprus alergenai

Analiz atliko

dr. Jurga B dien