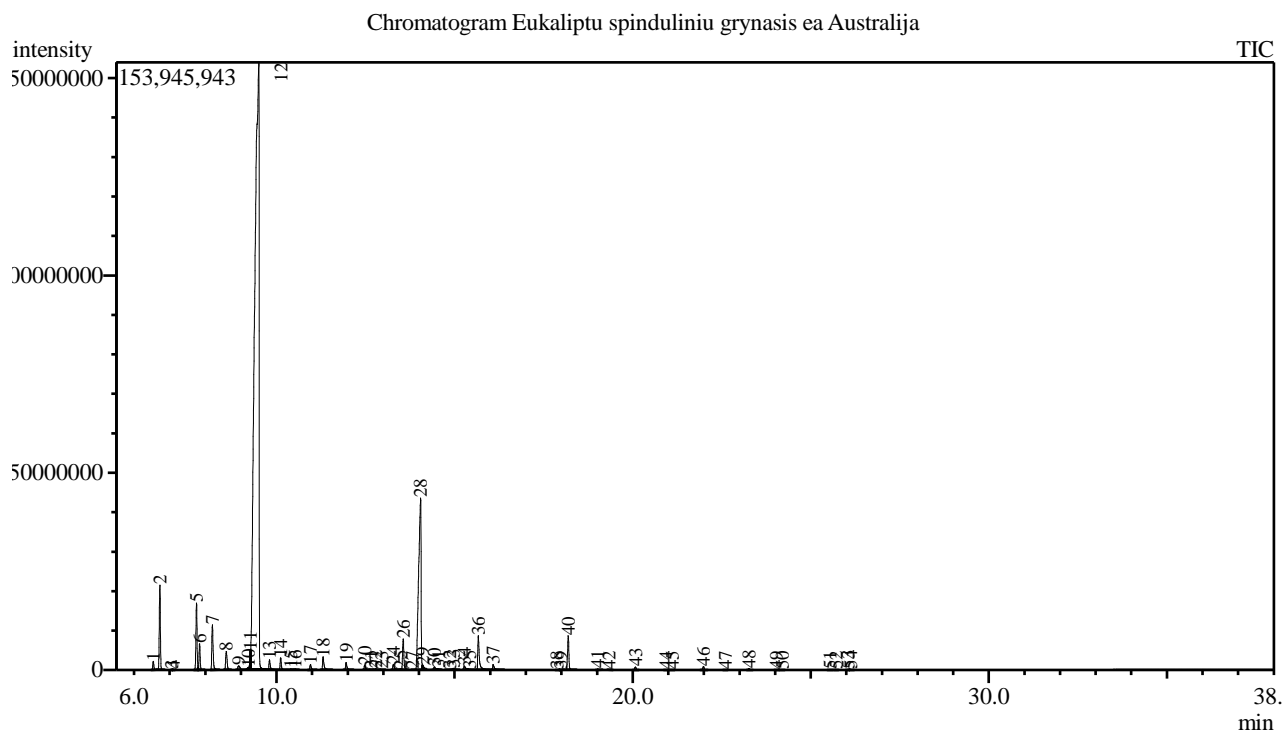


Analysis numb.: GC752
 Analysis date: 2019 09 23
 Sample name: Eukalipt spindulini grynasis ea
 Botanical name: Eucalyptus radiata
 Sample batch num: P207055
 Sample origin: Australija
 Best before:



Peak Report TIC

Peak#	R.Time	Area	Area%	Name
1	6.539	4542033	0.25	Thujene <alpha->
2	6.725	45275818	2.50	Pinene <alpha->
3	7.058	181682	0.01	Fenchene <alpha->
4	7.103	359321	0.02	Camphene
5	7.753	36858253	2.04	Sabinene
6	7.840	14172011	0.78	Pinene <beta->
7	8.199	28278541	1.56	Myrcene
8	8.589	12888845	0.71	Phellandrene <alpha->
9	8.939	3991927	0.22	Terpinene <alpha->
10	9.210	1489284	0.08	Cymene <para->
11	9.273	6017542	0.33	Limonene*
12	9.504	1319505390	72.93	Eucalyptol
13	9.803	5657908	0.31	Ocimene <trans-, beta->
14	10.117	6877089	0.38	Terpinene <gamma->
15	10.405	463699	0.03	Sabinene hydrate <cis->
16	10.519	610953	0.03	Linalool oxide <cis->
17	10.953	3517826	0.19	Terpinolene
18	11.309	9007119	0.50	Linalool*
19	11.954	4775690	0.26	Menth-2-en-1-ol <cis-, para->
20	12.476	3229007	0.18	Menth-2-en-1-ol <trans-para->
21	12.649	347472	0.02	Isopulegol
22	12.783	1009526	0.06	Citronellal
23	12.954	119812	0.01	Isopulegol
24	13.282	4465239	0.25	Terpineol <delta->

Peak#	R.Time	Area	Area%	Name
25	13.477	427837	0.02	Linalool oxide <cis-> (pyranoid)
26	13.557	19881191	1.10	Terpinen-4-ol
27	13.817	109957	0.01	Cryptone
28	14.047	205328700	11.35	Terpineol <alpha->
29	14.103	1950113	0.11	Piperitol <cis->
30	14.434	1891837	0.10	Piperitol <trans->
31	14.554	551831	0.03	3-Cyclohexene-1-acetaldehyde, .alpha.,4-dim
32	14.860	183045	0.01	Menth-1-en-9-al <para->
33	14.964	1757486	0.10	Citronellol*
34	15.275	2764139	0.15	Neral
35	15.423	472133	0.03	Methyl phenethyl ketone
36	15.667	25961490	1.43	Geraniol*
37	16.082	4385142	0.24	Geranial
38	17.883	216732	0.01	Elemene <delta->
39	17.978	130104	0.01	Hydroxycineole acetate <exo-2->
40	18.191	21789011	1.20	Terpinyl acetate <alpha->
41	19.019	527762	0.03	Geranyl acetate
42	19.341	143160	0.01	Elemene <beta->
43	20.078	1883803	0.10	Caryophyllene <(E)->
44	20.938	245091	0.01	Humulene <alpha->
45	21.118	196823	0.01	Alloaromadendrene
46	21.990	2321579	0.13	Bicyclogermacrene
47	22.597	71349	0.00	Cadinene <delta->
48	23.265	835611	0.05	Elemol <alpha->
49	24.038	195805	0.01	Spathulenol
50	24.205	239784	0.01	Caryophyllene oxide + Globulol
51	25.542	300376	0.02	Eudesmol <gamma->
52	25.709	133005	0.01	Unknown
53	26.054	407907	0.02	Eudesmol <beta->
54	26.120	333900	0.02	Eudesmol<alpha->
		1809278690	100.00	

Kosmetiniai alergenai: *-silpnas, **-vidutinio stiprumo, ***- stiprus alergenai

Analiz atliko

dr. Jurga B dien