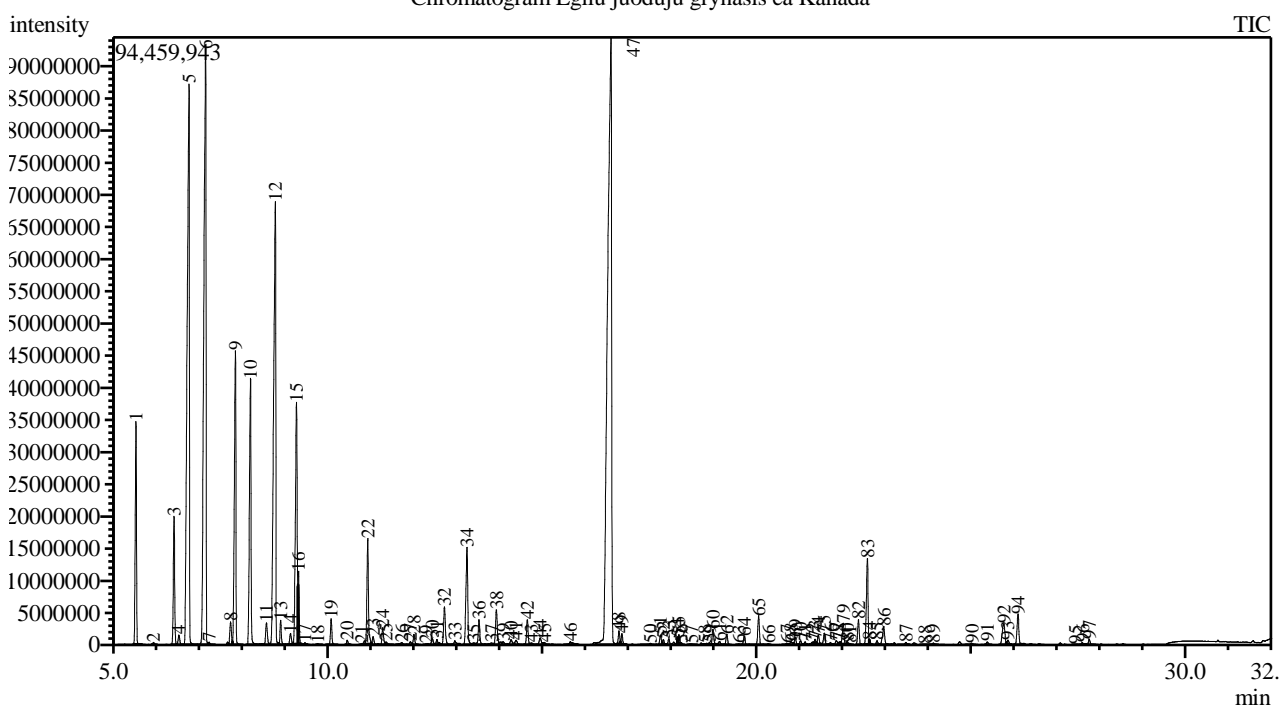


Analysis numb.: GC779
 Analysis date: 2019 10 14
 Sample name: Egli juod j grynasis ea
 Botanical name: Picea mariana
 Sample batch num: BPIMACAN09T
 Sample origin: Kanada
 Best before:

Chromatogram Egliu juoduju grynasis ea Kanada



Peak Report TIC

Peak#	R.Time	Area	Area%	Name
1	5.530	70466369	2.98	Santene
2	5.939	648575	0.03	1-Methyl-6-methylenebicyclo[3.2.0]heptane
3	6.418	43230841	1.83	Tricyclene
4	6.529	3848792	0.16	Thujene <alpha->
5	6.767	313662058	13.28	Pinene <alpha->
6	7.154	332020522	14.06	Camphene
7	7.237	820937	0.03	Thuja-2,4(10)-diene
8	7.738	9153488	0.39	Sabinene
9	7.850	113537470	4.81	Pinene <beta->
10	8.202	105979985	4.49	Myrcene
11	8.574	9269209	0.39	Phellandrene <alpha->
12	8.781	238110997	10.08	Carene <delta-3->
13	8.906	7874119	0.33	Terpinene <alpha->
14	9.135	4556078	0.19	Cymene <para->
15	9.274	109550833	4.64	Limonene*
16	9.322	16927268	0.72	Eucalyptol
17	9.471	486074	0.02	Ocimene <cis-, beta->
18	9.765	389739	0.02	Ocimene <trans-, beta->
19	10.083	9134391	0.39	Terpinene <gamma->
20	10.458	1533680	0.06	Unknown
21	10.796	300327	0.01	Cymenene <para->
22	10.937	41612716	1.76	Terpinolene
23	11.063	3480776	0.15	Camphenone <6->
24	11.285	6871127	0.29	Linalool*

Peak#	R.Time	Area	Area%	Name
25	11.367	1467163	0.06	Unknown
26	11.732	1370816	0.06	Fenchol <endo->
27	11.932	1220225	0.05	Menth-2-en-1-ol <cis-, para->
28	12.015	4095281	0.17	Campholenal <alpha->
29	12.296	299324	0.01	Menthatriene <1,3,8-para->
30	12.444	3049917	0.13	Pinocarveol <trans->
31	12.551	2036654	0.09	Camphor
32	12.727	16635279	0.70	Camphene hydrate
33	12.970	2242319	0.09	Isoborneol
34	13.253	44616405	1.89	Borneol
35	13.413	780647	0.03	Pinocamphone <cis->
36	13.532	10564328	0.45	Terpinen-4-ol
37	13.828	1141608	0.05	Cymen-8-ol <para->
38	13.938	15537159	0.66	Terpineol <alpha->
39	14.096	1454635	0.06	Myrtenol
40	14.281	2680686	0.11	Unknown
41	14.396	2409466	0.10	Dihydro carveol <iso->
42	14.660	9794928	0.41	Fenchyl acetate
43	14.756	970052	0.04	Carveol <trans->
44	14.957	3586278	0.15	Citronellol*
45	15.061	1181035	0.05	Thymol methyl ether
46	15.663	2353549	0.10	Piperitone + Geraniol*
47	16.611	605591825	25.65	Bornyl acetate
48	16.796	4607767	0.20	Unknown
49	16.864	4062730	0.17	Pinocarvyl acetate <trans->
50	17.535	874721	0.04	Myrtenyl acetate
51	17.763	3642972	0.15	Elemene <delta->
52	17.832	1609382	0.07	Carvyl acetate <trans->
53	17.963	2421972	0.10	Hydroxycineole acetate <exo-2->
54	18.170	1714146	0.07	Terpinyl acetate <alpha->
55	18.193	3306109	0.14	Citronellyl acetate
56	18.252	324330	0.01	Longipinene <alpha->
57	18.494	590947	0.03	Neryl acetate
58	18.805	297832	0.01	Longicyclene
59	18.904	582267	0.02	Copaene <alpha->
60	18.988	5638546	0.24	Geranyl acetate
61	19.147	1541938	0.07	(6E)-6-Methyl-5-(1-methylethylidene)-6,8-n
62	19.317	4297738	0.18	Elemene <beta->
63	19.597	336062	0.01	Methyleugenol
64	19.723	3414540	0.14	Longifolene
65	20.058	11798112	0.50	Caryophyllene <(E)->
66	20.286	382240	0.02	Copaene <beta->
67	20.712	705813	0.03	Muurolo-3,5-diene <cis->
68	20.812	1812046	0.08	Muurolo-3,5-diene <trans->
69	20.913	2908614	0.12	Humulene <alpha->
70	21.029	1736792	0.07	Unknown
71	21.141	1178381	0.05	Muurolo-4(14),5-diene <cis->
72	21.308	1044903	0.04	Dodecanol
73	21.369	1092674	0.05	Cadina-1(6),4-diene <trans->
74	21.447	3690509	0.16	Muurolo-ene <gamma->
75	21.590	5154707	0.22	Germacrene D
76	21.733	975752	0.04	Selinene <beta->
77	21.872	2024559	0.09	Amorphene <gamma->
78	21.940	350337	0.01	Selinene <alpha->
79	22.027	8601676	0.36	Muurolo-ene <alpha->
80	22.122	817139	0.03	Farnesene <(E,E)-, alpha->
81	22.183	338959	0.01	Amorphene <delta->
82	22.388	10020679	0.42	Cadinene <gamma->
83	22.592	36676910	1.55	Cadinene <delta->
84	22.640	890109	0.04	Zonarene
85	22.821	1452214	0.06	Cadina-1,4-diene <trans->
86	22.977	10032680	0.42	Cadinene <alpha-> + Bisabolene <(Z)-, alpha
87	23.492	1089831	0.05	Nerolidol <(E)->
88	23.943	519165	0.02	Germacren D-4-ol
89	24.136	1111382	0.05	Epiglobulol
90	25.028	1047686	0.04	Diepicubenol <1,10->
91	25.392	1358899	0.06	Epicubenol
92	25.775	14110254	0.60	T-Muurolo
93	25.869	1903324	0.08	Muurolo <alpha->

Peak#	R.Time	Area	Area%	Name
94	26.109	14518065	0.61	Cadinol <alpha->
95	27.444	348077	0.01	Farnesol <(2Z,6Z)->**
96	27.611	829047	0.04	Ambrettolide
97	27.771	2813885	0.12	Unknown
		2361145369	100.00	

Kosmetiniai alergenai: *-silpnas, **-vidutinio stiprumo, ***- stiprus alergenai

Analiz atliko

dr. Jurga B dien