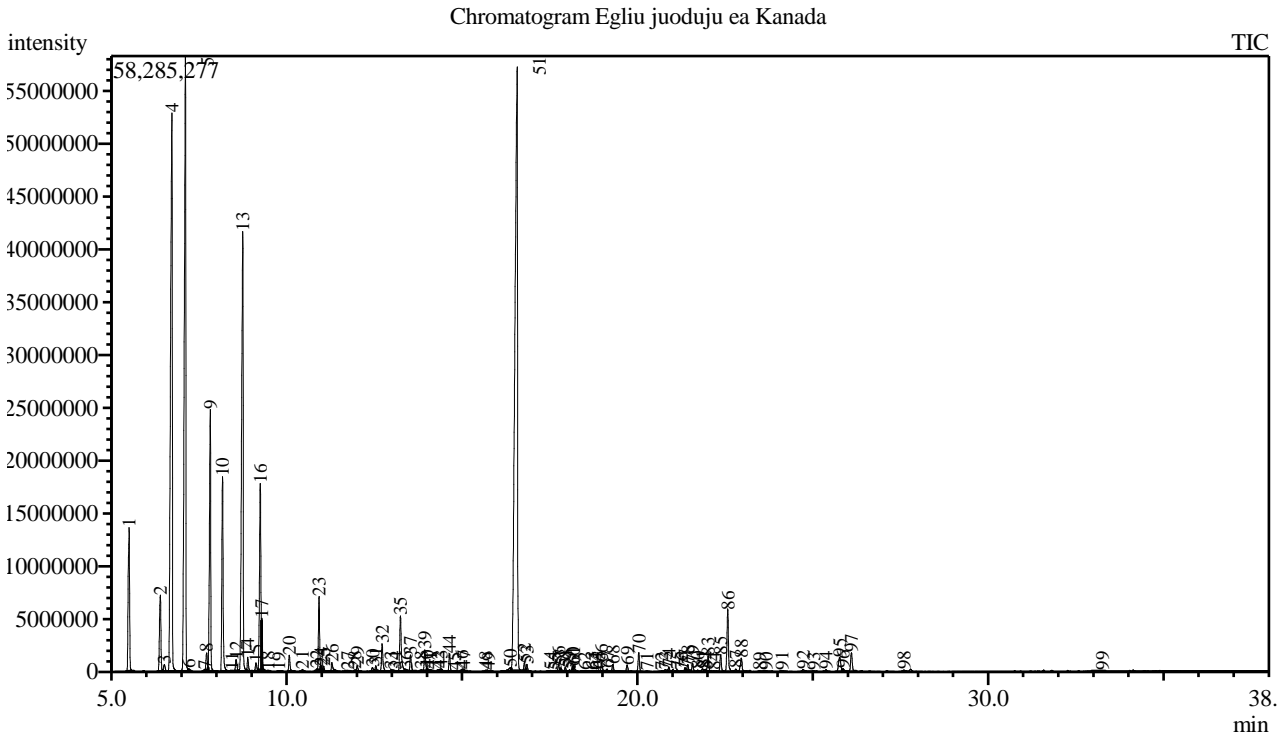


Analysis numb.: GC988  
 Analysis date: 2020 09 23  
 Sample name: Egliu juoduju ea  
 Botanical name: Picea mariana  
 Sample batch num: BPIMACAN10T1C  
 Sample origin: Kanada  
 Best before: 2022 01



Peak Report TIC

Peak#	R.Time	Area	Area%	Name
1	5.510	38166061	3.24	Santene
2	6.398	20877092	1.77	Tricyclene
3	6.515	2096942	0.18	Thujene <alpha->
4	6.729	182646947	15.49	Pinene <alpha->
5	7.115	177384046	15.04	Camphene
6	7.217	126470	0.01	Thuja-2,4(10)-diene
7	7.656	361672	0.03	Verbenene
8	7.719	4103783	0.35	Sabinene
9	7.823	61149900	5.19	Pinene <beta->
10	8.173	46488799	3.94	Myrcene
11	8.443	52743	0.00	Carene <delta-, 2->
12	8.560	3014106	0.26	Phellandrene <alpha->
13	8.749	128830166	10.93	Carene <delta-3->
14	8.893	3344278	0.28	Terpinene <alpha->
15	9.127	2467433	0.21	Cymene <para->
16	9.248	48278546	4.09	Limonene*
17	9.293	8119878	0.69	Eucalyptol
18	9.471	163722	0.01	Ocimene <cis-, beta->
19	9.777	139472	0.01	Ocimene <trans-, beta->
20	10.077	3816411	0.32	Terpinene <gamma->
21	10.450	472588	0.04	Unknown
22	10.853	438197	0.04	Mentha-2,4(8)-diene <para->
23	10.923	16206782	1.37	Terpinolene
24	10.980	308660	0.03	Cymenene <para->

Peak#	R.Time	Area	Area%	Name
25	11.053	1454277	0.12	Camphenone <6->
26	11.289	2508089	0.21	Linalool*
27	11.738	294172	0.02	Fenchol <exo->
28	11.940	346236	0.03	Menth-2-en-1-ol <cis-, para->
29	12.012	1488881	0.13	Campholenal <alpha->
30	12.448	1068842	0.09	Pinocarveol <trans->
31	12.543	1394995	0.12	Camphor
32	12.723	7479845	0.63	Camphene hydrate
33	12.979	709282	0.06	Isoborneol
34	13.080	318183	0.03	Mentha-1,5-dien-8-ol
35	13.244	16989028	1.44	Borneol
36	13.403	90718	0.01	Pinocamphone <cis->
37	13.532	4364764	0.37	Terpinen-4-ol
38	13.840	377546	0.03	Cymen-8-ol <para-> + Unknown
39	13.939	5574949	0.47	Terpineol <alpha->
40	14.006	257617	0.02	Myrtenal
41	14.116	149283	0.01	Myrtenol
42	14.311	576610	0.05	Unknown
43	14.405	972346	0.08	Verbenone + Unknown
44	14.644	4066841	0.34	Fenchyl acetate
45	14.787	230822	0.02	Carveol <trans->
46	14.988	431331	0.04	Citronellol*
47	15.052	552398	0.05	Thymol methyl ether
48	15.675	374093	0.03	Piperitone
49	15.757	295773	0.03	Geranial
50	16.373	2319587	0.20	Verbenyl acetate <cis->
51	16.572	295664330	25.08	Bornyl acetate
52	16.779	1945183	0.16	Unknown
53	16.848	1681495	0.14	Pinocarvyl acetate <trans->
54	17.525	351610	0.03	Myrtenyl acetate
55	17.651	97569	0.01	Pinocarvyl acetate <cis->
56	17.753	1537935	0.13	Elemene <delta->
57	17.824	711181	0.06	Caryvl acetate <trans->
58	17.950	1035576	0.09	exo-2-Hydroxycineole acetate
59	18.063	357052	0.03	Unknown
60	18.160	697420	0.06	Terpinyl acetate <alpha->
61	18.184	1990698	0.17	Citronellyl acetate + Longipinene <alpha->
62	18.491	256549	0.02	Eugenol***+ Unknown
63	18.710	312079	0.03	Unknown
64	18.790	239789	0.02	Longicyclene
65	18.894	309508	0.03	Copaene <alpha->
66	18.979	2242878	0.19	Geranyl acetate
67	19.138	706338	0.06	Unknown
68	19.304	1991229	0.17	Elemene <beta->
69	19.712	1827017	0.15	Longifolene
70	20.044	4755107	0.40	Caryophyllene
71	20.275	154522	0.01	Copaene <beta->
72	20.697	221357	0.02	Muurola-3,5-diene <cis->
73	20.801	697778	0.06	Muurola-3,5-diene <trans->
74	20.901	1174142	0.10	Humulene <alpha->
75	21.137	469986	0.04	Muurola-4(14),5-diene <cis->
76	21.262	122691	0.01	Isocaryophyllene
77	21.359	1000512	0.08	Cadina-1(6),4-diene <trans->
78	21.437	1541048	0.13	Murolene <gamma->
79	21.579	2287023	0.19	Germacrene D
80	21.723	372487	0.03	Selinene <beta->
81	21.863	910987	0.08	Amorphene <gamma->
82	21.933	78588	0.01	Selinene <alpha->
83	22.017	3850057	0.33	Murolene <alpha->
84	22.177	358192	0.03	Farnesene <(E)-, alpha-> + Bisabolene <beta->
85	22.379	4476503	0.38	Cadinene <gamma->
86	22.580	17018835	1.44	Cadinene <delta->
87	22.812	736566	0.06	Cadina-1,4-diene <trans->
88	22.967	4485968	0.38	Cadinene <alpha-> + Bisabolene <(Z)-, alpha->
89	23.486	365836	0.03	Nerolidol <(E)->
90	23.665	433337	0.04	Salvial-4(14)-en-1-one
91	24.128	342758	0.03	Viridiflorol
92	24.731	727045	0.06	Unknown
93	25.024	476432	0.04	Diepicubenol <1,10->

Peak#	R.Time	Area	Area%	Name
94	25.385	552560	0.05	Epicubenol
95	25.764	5995280	0.51	T-Muurolol
96	25.870	810491	0.07	Muurolol <alpha->
97	26.107	6020027	0.51	Cadinol <alpha->
98	27.604	333345	0.03	Ambrettolide
99	33.255	632382	0.05	Abienol
		1179098480	100.00	

Kosmetiniai alergenai: \*-silpnas, \*\*-vidutinio stiprumo, \*\*\*- stiprus alergenai

Analiz atliko

dr. Jurga B dien