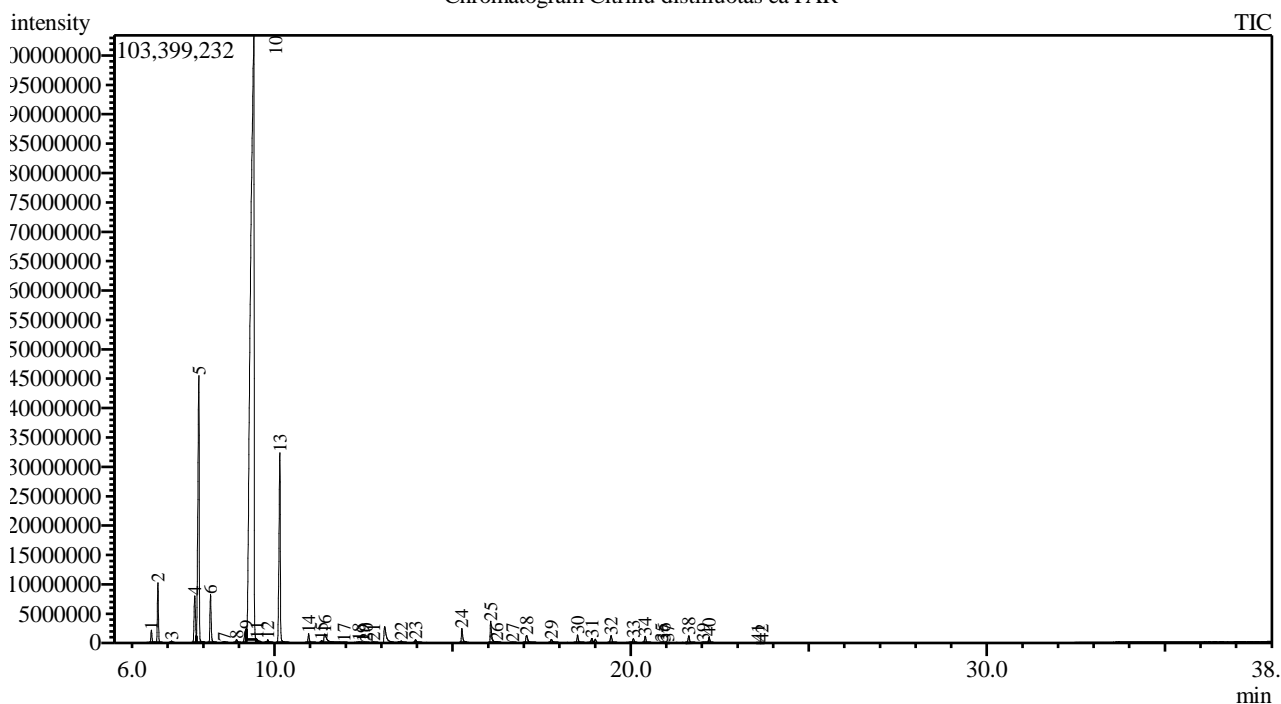


Analysis numb.: GC820  
 Analysis date: 2019 12 18  
 Sample name: Citrin distiliuotas ea  
 Botanical name: Citrus limon  
 Sample batch num: LEMDO1119T2  
 Sample origin: PAR  
 Best before: 2021 11

Chromatogram Citrinu distiliuotas ea PAR



Peak Report TIC

Peak#	R.Time	Area	Area%	Name
1	6.543	4386164	0.41	Thujene <alpha->
2	6.726	20568080	1.93	Pinene <alpha->
3	7.109	625559	0.06	Camphene
4	7.760	22166573	2.08	Sabinene
5	7.875	121536023	11.41	Pinene <beta->
6	8.202	19170616	1.80	Myrcene
7	8.594	482902	0.05	Phellandrene <alpha->
8	8.935	1595032	0.15	Terpinene <alpha->
9	9.208	7665442	0.72	Cymene <para->
10	9.419	717728929	67.38	Limonene*
11	9.514	1052003	0.10	Ocimene <cis-, beta->
12	9.810	1142989	0.11	Ocimene <trans-, beta->
13	10.150	83327948	7.82	Terpinene <gamma->
14	10.958	3687294	0.35	Terpinolene
15	11.320	955272	0.09	Linalool*
16	11.413	8970381	0.84	Nonanal + Unknown
17	11.950	160231	0.02	Mentha-2,8-dien-1-ol <trans-, para->
18	12.375	363621	0.03	Limonene oxide <cis->
19	12.487	58185	0.01	Pinocarveol <trans->
20	12.578	121967	0.01	Camphor
21	12.781	340450	0.03	Citronellal
22	13.557	930220	0.09	Terpinen-4-ol
23	13.960	1649557	0.15	Terpineol <alpha->
24	15.259	6609193	0.62	Neral

Peak#	R.Time	Area	Area%	Name
25	16.070	10214415	0.96	Geranial
26	16.240	67739	0.01	Perillaldehyde
27	16.684	155068	0.01	Citronellyl acetate
28	17.080	4771575	0.45	Neryl acetate
29	17.774	2228967	0.21	Geranyl acetate
30	18.510	3682488	0.35	Unknown (panasus i Geranyl acetate)
31	18.911	2410078	0.23	Caryophyllene <(Z)->
32	19.452	3954622	0.37	Bergamotene <alpha-, cis->
33	20.076	2296468	0.22	Caryophyllene <(E)->
34	20.410	3020684	0.28	Bergamotene <alpha-, trans->
35	20.873	162443	0.02	Farnesene <(E)-, beta->
36	20.938	260522	0.02	Humulene <alpha->
37	21.040	89826	0.01	Santalene <beta->
38	21.632	3537556	0.33	Bisabolene <beta->
39	22.045	224851	0.02	Bisabolene <(Z)-, alpha->
40	22.206	2594331	0.24	Unknown
41	23.581	118548	0.01	Spathulenol
42	23.687	75492	0.01	Caryophyllene oxide
		1065160304	100.00	

Kosmetiniai alergenai: \*-silpnas, \*\*-vidutinio stiprumo, \*\*\*- stiprus alergenai

Analiz atliko

dr. Jurga B dien