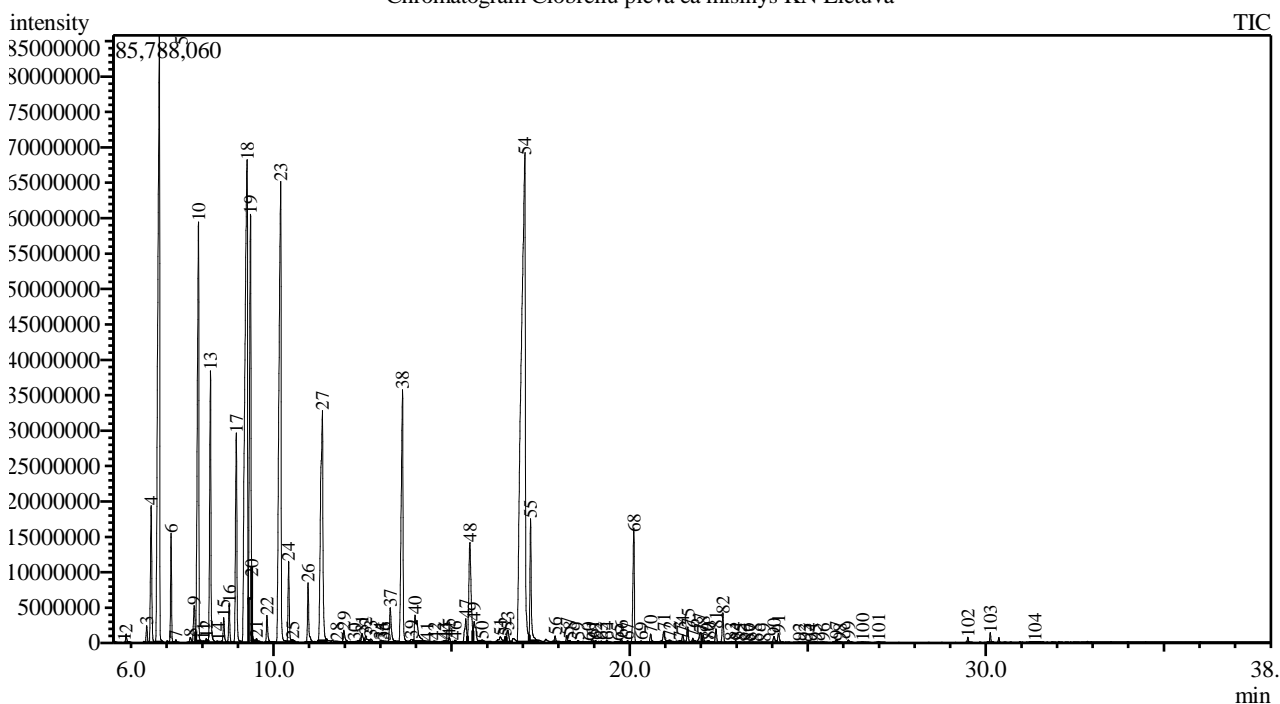


Analysis numb.: GC760  
 Analysis date: 2019 09 25  
 Sample name: iobreli pieva ea mišinys  
 Botanical name:  
 Sample batch num: PN19VA06  
 Sample origin: KN Lietuva  
 Best before: 2021 02

Chromatogram Ciobreliu pieva ea misinys KN Lietuva



Peak Report TIC

Peak#	R.Time	Area	Area%	Name
1	5.543	272642	0.01	Santene
2	5.859	2598764	0.09	Nonane
3	6.439	5326921	0.19	Tricyclene
4	6.563	50580163	1.80	Thujene <alpha->
5	6.793	305303515	10.87	Pinene <alpha->
6	7.125	30247243	1.08	Camphene
7	7.259	783394	0.03	Thuja-2,4(10)-diene
8	7.667	2275850	0.08	3-Methylnonane
9	7.774	15900366	0.57	Sabinene
10	7.892	173145895	6.17	Pinene <beta->
11	8.031	250955	0.01	1-Octen-3-ol
12	8.113	882193	0.03	3-Octanone
13	8.230	97389060	3.47	Myrcene
14	8.449	1172615	0.04	Octanol <3->
15	8.603	9221899	0.33	Phellandrene <alpha->
16	8.756	13038372	0.46	Carene <delta-3->
17	8.956	80874752	2.88	Terpinene <alpha->
18	9.258	350386998	12.48	Cymene <para->
19	9.354	151180084	5.38	Limonene*
20	9.387	9027394	0.32	Eucalyptol
21	9.522	779292	0.03	Ocimene <cis-, beta->
22	9.815	9969695	0.36	Ocimene <trans-, beta->
23	10.201	269067784	9.58	Terpinene <gamma->
24	10.424	26520226	0.94	Sabinene hydrate <cis->

Peak#	R.Time	Area	Area%	Name
25	10.538	288736	0.01	Linalool oxide <cis->
26	10.971	21953558	0.78	Terpinolene
27	11.373	149451781	5.32	Linalool*
28	11.784	357156	0.01	Fenchyl alcohol
29	11.977	6145622	0.22	Menth-2-en-1-ol <cis-, para->
30	12.269	345593	0.01	Limonene oxide <cis->
31	12.487	5440167	0.19	Pinocarveol <trans->
32	12.589	4020254	0.14	Camphor
33	12.730	2236954	0.08	Chrysanthemol <trans->
34	13.001	555569	0.02	Unknown
35	13.053	388811	0.01	Pinocamphone <cis->
36	13.113	203337	0.01	Pinocarvone
37	13.279	18402446	0.66	Borneol
38	13.623	127293738	4.53	Terpinen-4-ol
39	13.875	2099421	0.07	Cymen-8-ol <para->
40	13.972	23540451	0.84	Terpineol <alpha->
41	14.315	390600	0.01	Dihydro carvone <cis-> + Piperitol <cis->
42	14.528	331071	0.01	Piperitol <trans->
43	14.788	578405	0.02	Verbenone
44	14.853	250276	0.01	Carveol <trans->
45	14.936	1953427	0.07	Isobornyl formate
46	15.099	1391613	0.05	Carvacrol methyl ether
47	15.399	12747712	0.45	Thymol methyl ether + Carvone
48	15.515	62771696	2.24	Carvone
49	15.635	13909096	0.50	Linalyl acetate
50	15.856	2201429	0.08	Geraniol*
51	16.368	4723779	0.17	Geranial+ Chrysanthenyl acetate <cis->
52	16.508	2447587	0.09	Isobornyl acetate
53	16.579	6461671	0.23	Bornyl acetate
54	17.057	553538546	19.71	Thymol
55	17.218	44677849	1.59	Carvacrol
56	17.911	2242861	0.08	Elemene <delta->
57	18.240	2505742	0.09	Terpinyl acetate <alpha->
58	18.327	827232	0.03	Thymyl acetate
59	18.555	1002987	0.04	Neryl acetate + Eugenol**
60	18.847	551037	0.02	Ylangene <alpha->
61	18.955	1199347	0.04	Copaene <alpha->
62	19.048	719364	0.03	Geranyl acetate
63	19.205	514239	0.02	Bourbonene <beta->
64	19.362	797106	0.03	Elemene <beta->
65	19.651	409462	0.01	Eugenol <methyl->
66	19.769	1623466	0.06	Longifolene
67	19.940	647547	0.02	Funebrene <2-epi-beta->
68	20.119	44604928	1.59	Caryophyllene <(E)->
69	20.327	1196035	0.04	Copaene <beta-> + Elemene <gamma->
70	20.594	3828466	0.14	Aromadendrene
71	20.961	7466957	0.27	Humulene <alpha->
72	21.133	1868287	0.07	Alloaromadendrene
73	21.413	480446	0.02	Cadina-1(6),4-diene <trans->
74	21.492	2739408	0.10	Murolene <gamma->
75	21.634	6330871	0.23	Germacrene D
76	21.773	1418184	0.05	Selinene <beta->
77	21.992	6168086	0.22	Viridiflorene + Bicyclgermacrene
78	22.065	2405367	0.09	Murolene <alpha->
79	22.168	115479	0.00	Farnesene <(E,E)-, alpha->
80	22.220	826509	0.03	Bisabolene <beta->
81	22.429	5388071	0.19	Cadinene <gamma->
82	22.622	11255744	0.40	Cadinene <delta->
83	22.859	472422	0.02	Cadina-1,4-diene <trans->
84	22.982	860186	0.03	Cadinene <alpha->
85	23.113	229368	0.01	Calacorene <alpha->
86	23.287	128893	0.00	Elemol <alpha->
87	23.377	321712	0.01	Geranyl butyrate
88	23.538	368565	0.01	Nerolidol <(E)->
89	23.781	220809	0.01	Hexenyl benzoate <(3Z)->
90	24.057	3412826	0.12	Spathulenol
91	24.185	4503070	0.16	Caryophyllene oxide
92	24.768	560109	0.02	Cedrol
93	24.927	468861	0.02	Humulene epoxide II

Peak#	R.Time	Area	Area%	Name
94	25.087	139284	0.00	Cubenol <1,10-di-epi->
95	25.221	557722	0.02	Unknown
96	25.440	361197	0.01	Epicubenol
97	25.810	1209114	0.04	T-Muurolol
98	25.908	262936	0.01	Muurolol <alpha->
99	26.146	1263880	0.05	Cadinol <alpha->
100	26.544	502033	0.02	Allohimachalol
101	26.994	517864	0.02	Shyobunol
102	29.500	1730723	0.06	Unknown
103	30.129	2906281	0.10	Unknown
104	31.379	490997	0.02	Camphorene <p->
		2807916503	100.00	

Kosmetiniai alergenai: \*-silpnas, \*\*-vidutinio stiprumo, \*\*\*- stiprus alergenai

Analiz atliko

dr. Jurga B dien