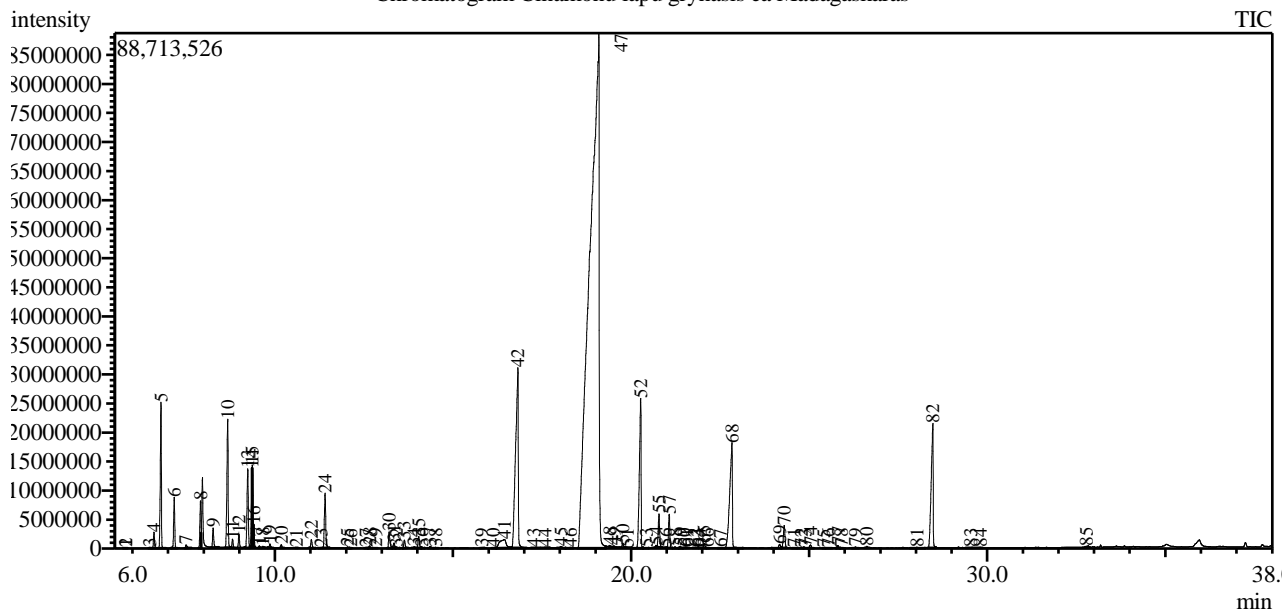


Analysis numb.: GC415  
 Analysis date: 2017 03 08  
 Sample name: Cinamon lap grynasis ea  
 Botanical name: Cinnamomum verum, syn. C. Zeylanicum (Ceylon Cinnamon Leaf)  
 Sample batch num: CLOC0515PFE  
 Sample origin: Madagascar  
 Best before: 2019 07

Chromatogram Cinamonu lapu grynasis ea Madagaskaras



Peak Report TIC

Peak#	R.Time	Area	Area%	Name
1	5.394	97338	0.00	Isoamyl acetate
2	5.773	221667	0.01	1,3,5,7-Cyclooctatetraene
3	6.488	349277	0.01	Tricyclene
4	6.603	5620469	0.23	Thujene <alpha->
5	6.800	53090221	2.20	Pinene <alpha->
6	7.172	18218951	0.76	Camphene
7	7.503	1706322	0.07	Benzaldehyde
8	7.909	17393076	0.72	Pinene <beta->
9	8.264	8012402	0.33	Myrcene
10	8.674	53213525	2.21	Phellandrene <alpha->
11	8.809	3103746	0.13	Carene <delta-3->
12	8.989	5179196	0.21	Terpinene <alpha->
13	9.237	34833922	1.44	Cymene <para->
14	9.357	17942235	0.74	Sylvestrene
15	9.363	15053571	0.62	Phellandrene <beta->
16	9.405	4932243	0.20	Eucalyptol
17	9.563	685235	0.03	Ocimene <cis-, beta->
18	9.660	1233375	0.05	Benzyl alcohol*
19	9.859	1689121	0.07	Ocimene <trans-, beta->
20	10.177	1213541	0.05	Terpinene <gamma->
21	10.596	106502	0.00	Linalool oxide <cis->
22	11.022	3825543	0.16	Terpinolene
23	11.296	197045	0.01	Undecane <n->
24	11.408	24790288	1.03	Linalool*
25	12.042	488236	0.02	Menth-2-en-1-ol <cis-, para->
26	12.130	89490	0.00	Campholenal <alpha->
27	12.557	478246	0.02	Menth-2-en-1-ol <trans-para->
28	12.656	947416	0.04	Camphor
29	12.827	320629	0.01	Camphene hydrate

Peak#	R.Time	Area	Area%	Name
30	13.206	7725404	0.32	Benzyl acetate
31	13.342	2389665	0.10	Borneol
32	13.413	624429	0.03	Benzoate <ethyl->
33	13.634	3568774	0.15	Terpinen-4-ol
34	13.911	760873	0.03	Cymen-8-ol <para->
35	14.037	5310201	0.22	Terpineol <alpha->
36	14.126	551447	0.02	Dodecane
37	14.359	989298	0.04	Unknown
38	14.507	419025	0.02	Piperitol <trans->
39	15.805	363879	0.02	Phenethyl acetate <2->
40	16.130	445306	0.02	Phenol <2-(1E)-propenyl->
41	16.443	18960040	0.79	Cinnamaldehyde <(E)->
42	16.822	162454676	6.74	Safrole
43	17.266	322904	0.01	Carvacrol
44	17.586	956970	0.04	Cinnamyl alcohol <(E)->***
45	18.033	1361570	0.06	(1S,2S,3R,5S)-(+)-Pinanediol
46	18.292	506744	0.02	Cubebene <alpha->
47	19.096	1599704246	66.35	Eugenol**
48	19.407	442891	0.02	Isovalerate <benzyl->
49	19.522	624849	0.03	Elemene <beta->
50	19.772	2262333	0.09	Methyleugenol
51	19.897	338907	0.01	Caryophyllene <(Z)->
52	20.270	86564910	3.59	Caryophyllene <(E)->
53	20.430	820926	0.03	Ylangene <beta->
54	20.700	1056633	0.04	Aromadendrene
55	20.785	15392606	0.64	Cinnamyl acetate <(E)->
56	20.965	44003	0.00	Isoeugenol <(E)->***
57	21.071	14962699	0.62	Humulene <alpha->
58	21.240	937003	0.04	Alloaromadendrene
59	21.386	1047643	0.04	Furan, 2,5-dibutyl-
60	21.498	309026	0.01	Cadina-1(6),4-diene<trans->
61	21.578	364726	0.02	Muurolene <gamma->
62	21.779	170328	0.01	Ionone <(E)-, beta-> + Phenyl ethyl 2-methyl
63	21.861	350151	0.01	Selinene <beta->
64	21.915	218634	0.01	Selinene <delta->
65	22.052	2179167	0.09	Viridiflorene
66	22.144	245040	0.01	Muurolene <alpha->
67	22.508	292618	0.01	Cadinene <gamma->
68	22.831	93386541	3.87	Eugenyl acetate
69	24.176	2619092	0.11	Spathulenol
70	24.301	12161449	0.50	Caryophyllene oxide
71	24.576	437182	0.02	Globulol + Cubeban-11-ol
72	24.781	953170	0.04	Rosifoliol + Unknown
73	24.883	489233	0.02	Tetradecanal
74	25.042	1886141	0.08	Humulene epoxide II
75	25.417	140152	0.01	Eudesmol <beta->
76	25.539	376959	0.02	Epicubenol
77	25.813	1461804	0.06	Caryophylla-4(12),8(13)-dien-5alpha-ol + Ar
78	25.910	255716	0.01	T-Muurolol
79	26.304	799315	0.03	Cadinol <alpha-> + Unknown
80	26.620	901948	0.04	Caryophyllene <14-hydroxy-(Z)->
81	28.028	1256699	0.05	Coniferyl alcohol
82	28.472	81427837	3.38	Benzyl benzoate*
83	29.537	138048	0.01	Phytone
84	29.805	296310	0.01	Benzoate <phenethyl->
85	32.787	947817	0.04	Phytol
		2411008785	100.00	

Kosmetiniai alergenai: \*-silpnas, \*\*-vidutinio stiprumo, \*\*\*- stiprus alergenai

Analiz atliko

dr. Jurga B dien