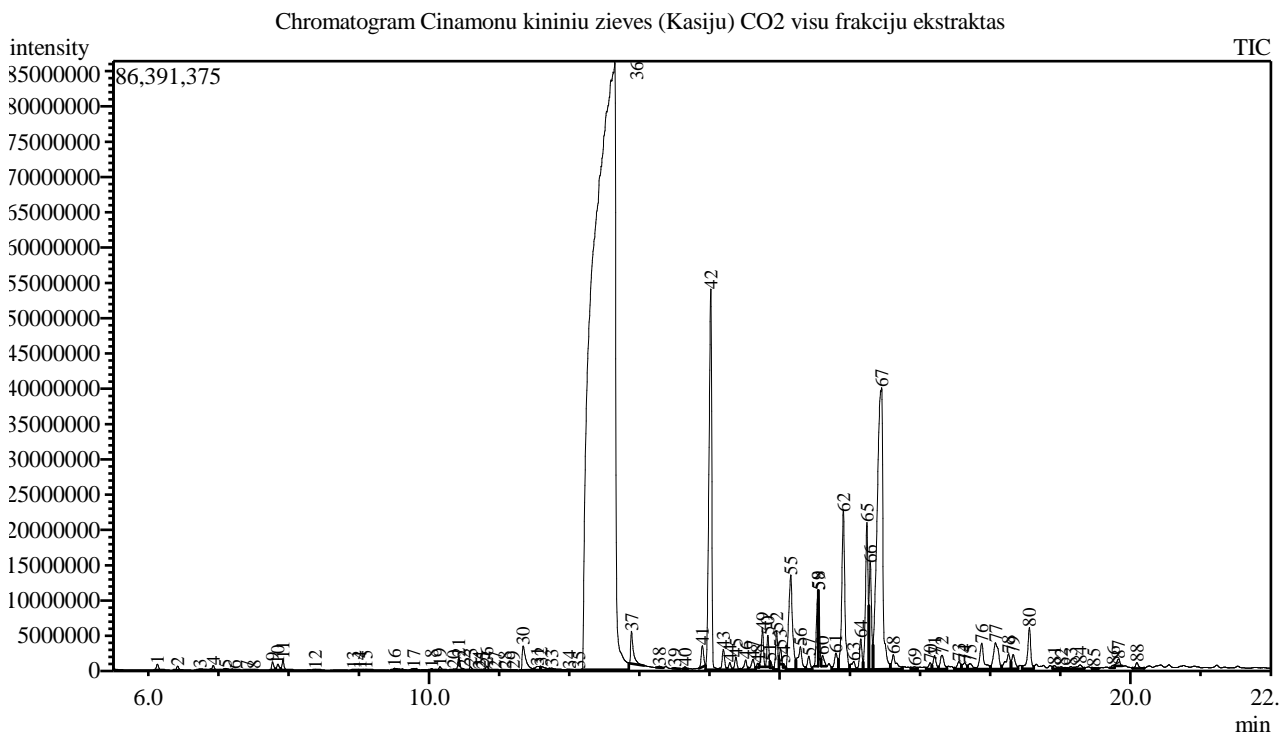


Analysis numb.: GC1289
 Analysis date: 2022 02 21
 Sample name: Cinamonu kininiu zievės (Kasiju) visu frakciju CO2 ekstraktas
 Botanical name: Cinnamomum cassia
 Sample batch num: LOT 712225
 Sample origin:
 Best before: 2026 12



Peak Report TIC

Peak#	R.Time	Area	Area%	Name
1	6.129	1904465	0.07	Pinene <alpha->
2	6.417	1242719	0.05	Camphene
3	6.739	1159080	0.04	Benzaldehyde
4	6.924	1526479	0.06	Pinene <beta->
5	7.097	1090326	0.04	Hept-5-en-2-one <6-methyl->
6	7.226	256997	0.01	Decane
7	7.407	123000	0.00	Phellandrene <alpha->
8	7.508	199028	0.01	Carene <delta-3->
9	7.769	2622767	0.10	Cymene <para->
10	7.845	2252704	0.08	Limonene*
11	7.919	2975840	0.11	Eucalyptol
12	8.382	265020	0.01	Terpinene <gamma->
13	8.927	103911	0.00	Terpinolene
14	9.016	109309	0.00	Undecane <n->
15	9.104	359169	0.01	Linalool*
16	9.507	1427922	0.05	Phenylethyl alcohol
17	9.784	584092	0.02	Anisole, <2-vinyl->
18	10.038	403594	0.01	Camphor
19	10.157	1135771	0.04	Menthone
20	10.351	419873	0.02	Isomenthone
21	10.427	4044183	0.15	Borneol
22	10.497	339647	0.01	Menthol
23	10.593	1220995	0.04	Terpinen-4-ol
24	10.720	85267	0.00	Cymen-8-ol <para->

Peak#	R.Time	Area	Area%	Name
25	10.767	161802	0.01	Acetophenone <para-, methyl->
26	10.825	1415839	0.05	Terpineol <alpha->
27	10.940	163851	0.01	Myrtenal + Estragole
28	11.086	301034	0.01	Cumamol <ortho->
29	11.200	139847	0.01	Verbenone
30	11.343	12844652	0.47	Cinnamaldehyde <(Z)->
31	11.546	2399865	0.09	Hydrocinnamyl alcohol
32	11.600	2389435	0.09	Nerol
33	11.749	1119424	0.04	Carvone
34	12.001	102746	0.00	Carvenone
35	12.137	193632	0.01	Geranial
36	12.650	1834883497	67.02	Cinnamaldehyde <(E)->
37	12.889	12320489	0.45	Cinnamyl alcohol <(E)->***
38	13.286	677743	0.02	Methyl anisate <ortho->
39	13.506	275578	0.01	Cubebene <alpha->
40	13.650	578237	0.02	Eugenol**
41	13.899	7118995	0.26	Cyclosativene
42	14.019	148927703	5.44	Copaene <alpha->
43	14.198	6952743	0.25	Elemene <beta->
44	14.290	2334651	0.09	Sativene
45	14.377	4198030	0.15	Sativene
46	14.516	3562707	0.13	Bergamotene <alpha-, cis->
47	14.621	4526149	0.17	Santalene <alpha->
48	14.686	1199369	0.04	Cedrene <alpha->
49	14.755	11047552	0.40	Caryophyllene <(E)->
50	14.831	8879250	0.32	Bergamotene <alpha-, trans->
51	14.863	1347105	0.05	Copaene <beta->
52	14.958	12300575	0.45	Cinnamyl acetate <(E)->
53	15.013	3634741	0.13	Farnesene <(Z)-, beta->
54	15.056	667200	0.02	Santalene <epi-, beta->
55	15.159	50517010	1.85	Coumarin*
56	15.297	12729061	0.46	Humulene <alpha->
57	15.416	5168852	0.19	Muurolene <gamma->
58	15.550	19232339	0.70	Curcumene <alpha->
59	15.553	10306783	0.38	Curcumene <gamma-> + Germacrene D
60	15.611	3803159	0.14	Amorphene <alpha->
61	15.803	7460277	0.27	Selinene <beta->
62	15.909	69426804	2.54	Muurolene <alpha-> + Bisabolene <beta->
63	16.057	4230590	0.15	Sesquicineole
64	16.158	10427131	0.38	Cadinene <gamma->
65	16.244	52584511	1.92	Cadinene <delta->
66	16.292	34403971	1.26	Bisabolone <(E)-, gamma-> + Calamenene <
67	16.454	226743933	8.28	Cinnamaldehyde <2-methoxy->
68	16.621	8995102	0.33	Calacorene <alpha->
69	16.924	1499156	0.05	Calacorene <beta->
70	17.147	2629895	0.10	Caryophyllene alcohol
71	17.210	5589643	0.20	Spathulenol
72	17.314	7312440	0.27	Caryophyllene oxide + Unknown
73	17.557	3695321	0.13	Humulene epoxide II + Unknown
74	17.639	3496309	0.13	Diepicubenol <1,10->
75	17.713	3090090	0.11	Corocalene <alpha->
76	17.882	14842252	0.54	Epicubenol
77	18.077	18583194	0.68	T-Muurolol + Muurolol <alpha->
78	18.264	9336466	0.34	Cadinol <alpha->
79	18.330	6774677	0.25	Bisabolol <epi-beta->
80	18.562	18217487	0.67	Bisabolol <alpha->
81	18.916	1435280	0.05	Farnesol <(2Z,6Z)->***
82	19.012	1137087	0.04	Calamenen-10-one <10-, nor->
83	19.152	1330191	0.05	Calamenene <5-hydroxy-cis->
84	19.283	2630765	0.10	Unknown
85	19.472	781343	0.03	Oplopenone
86	19.755	1104726	0.04	Benzyl benzoate*
87	19.830	2974570	0.11	Unknown
88	20.093	2971696	0.11	Hexadecanal
		2737978710	100.00	

Kosmetiniai alergenai: *-silpnas, ***-vidutinio stiprumo, ***- stiprus alergenai

Analiz atliko

dr. Jurga B dien

