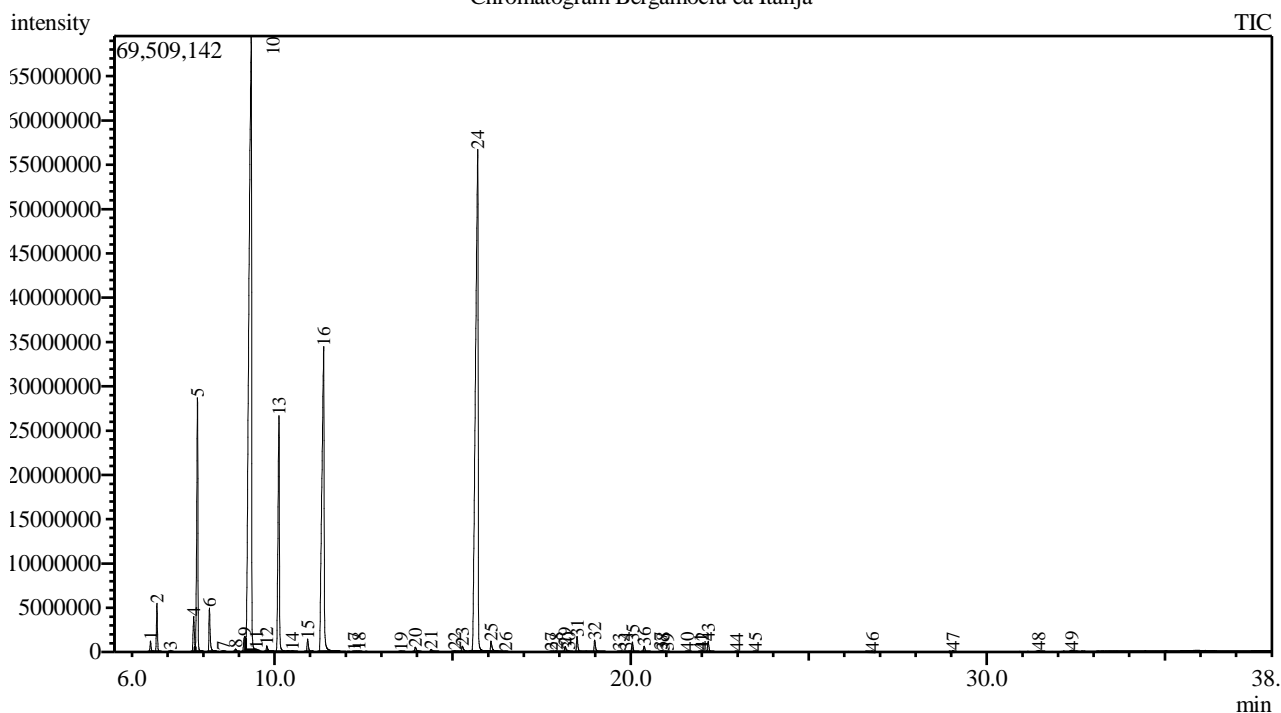


Analysis numb.: GC1014  
 Analysis date: 2020 10 21  
 Sample name: Bergamociu ea  
 Botanical name: Citrus aurantium ssp Bergamia  
 Sample batch num: LOT 0028731  
 Sample origin: Italija  
 Best before: 2021 10

Chromatogram Bergamociu ea Italija



Peak Report TIC

Peak#	R.Time	Area	Area%	Name
1	6.517	2502886	0.24	Thujene <alpha->
2	6.698	10932672	1.07	Pinene <alpha->
3	7.082	297250	0.03	Camphene
4	7.730	10076639	0.98	Sabinene
5	7.837	67545056	6.58	Pinene <beta->
6	8.171	11422802	1.11	Myrcene
7	8.564	226182	0.02	Phellandrene <alpha->
8	8.907	796129	0.08	Terpinene <alpha->
9	9.163	6480148	0.63	Cymene <para->
10	9.346	360575205	35.13	Limonene*
11	9.492	202074	0.02	Ocimene <cis-, beta->
12	9.783	1810089	0.18	Ocimene <trans-, beta->
13	10.125	74274585	7.24	Terpinene <gamma->
14	10.502	642002	0.06	Linalool oxide <cis->
15	10.931	3630075	0.35	Terpinolene
16	11.381	152613021	14.87	Linalool*
17	12.247	122639	0.01	Limonene oxide <cis->
18	12.371	163325	0.02	Limonene oxide <trans->
19	13.553	194462	0.02	Terpinen-4-ol
20	13.956	1674084	0.16	Terpineol <alpha->
21	14.396	965577	0.09	Acetate <octyl->
22	15.063	560434	0.05	Nerol
23	15.274	2500341	0.24	Neral
24	15.707	290820705	28.33	Linalyl acetate

Peak#	R.Time	Area	Area%	Name
25	16.082	3759026	0.37	Geranial
26	16.490	73763	0.01	Bornyl acetate
27	17.773	114186	0.01	Linalyl propionate
28	17.913	278043	0.03	Unknown
29	18.161	1737893	0.17	Terpinyl acetate <alpha->
30	18.256	345475	0.03	Unknown
31	18.500	4827030	0.47	Neryl acetate
32	18.995	3915692	0.38	Geranyl acetate
33	19.685	119748	0.01	Decyl acetate
34	19.877	244485	0.02	Bergamotene <alpha-, cis->
35	20.053	2962089	0.29	Caryophyllene
36	20.384	1739096	0.17	Bergamotene <alpha-, trans->
37	20.851	244639	0.02	Farnesene <(E)-, beta->
38	20.906	138624	0.01	Humulene <alpha->
39	21.023	64747	0.01	Santalene <beta->
40	21.595	210731	0.02	Germacrene D
41	21.959	45575	0.00	Bicyclogermacrene
42	22.019	200134	0.02	Bisabolene <(Z)-alpha->
43	22.182	3158330	0.31	Bisabolene <beta->
44	22.979	51904	0.01	Bisabolene <(E)-, alpha->
45	23.498	151869	0.01	Nerolidol <(E)->
46	26.784	230035	0.02	Bisabolol <epi-alpha->
47	29.052	284717	0.03	Nootkatone
48	31.459	307781	0.03	Citropten
49	32.385	305097	0.03	Bergaptene
		1026539091	100.00	

Kosmetiniai alergenai: \*-silpnas, \*\*-vidutinio stiprumo, \*\*\*- stiprus alergenai

Analiz atliko

dr. Jurga B dien