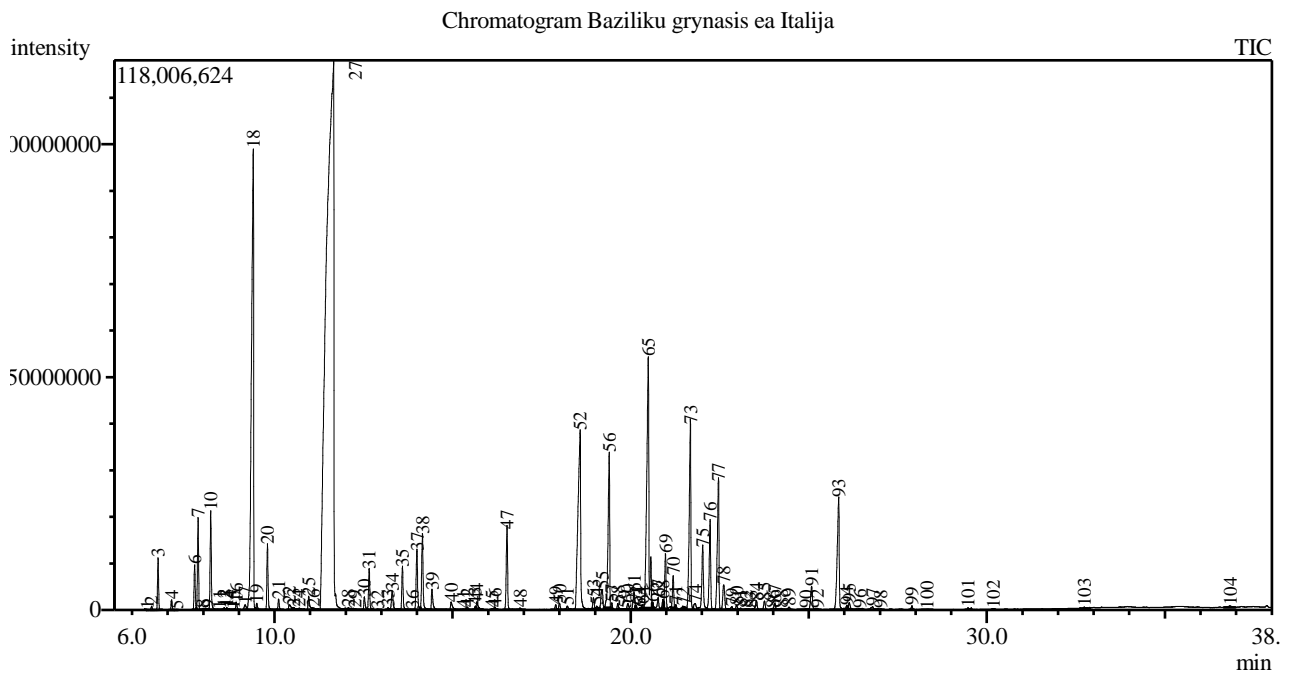


Analysis numb.: GC702  
 Analysis date: 2019 04 29  
 Sample name: Bazilik grynasis ea  
 Botanical name: Ocimum basilicum  
 Sample batch num: 20190419007  
 Sample origin: Italija  
 Best before: 2022 04

Linalolio cht. ftalat nerasta



Peak Report TIC

Peak#	R.Time	Area	Area%	Name
1	6.433	82021	0.00	Tricyclene
2	6.549	1573354	0.04	Thujene <alpha->
3	6.730	22211374	0.59	Pinene <alpha->
4	7.111	4276726	0.11	Camphene
5	7.253	198547	0.01	Thuja-2,4(10)-diene
6	7.756	21282801	0.57	Sabinene
7	7.854	41857418	1.12	Pinene <beta->
8	7.995	1261632	0.03	1-Octen-3-ol
9	8.110	819530	0.02	3-Octanone
10	8.208	48281569	1.29	Myrcene
11	8.460	537712	0.01	3-Octanol
12	8.588	1254702	0.03	Phellandrene <alpha->
13	8.657	1349172	0.04	Hex-(3Z)-enyl acetate
14	8.746	372845	0.01	Carene <delta-3->
15	8.847	215773	0.01	Hexyl acetate
16	8.927	3912536	0.10	Terpinene <alpha->
17	9.173	3794063	0.10	Cymene <para->
18	9.403	404633121	10.81	Limonene* + Eucalyptol
19	9.502	3793936	0.10	Ocimene <cis-, beta->
20	9.802	32059112	0.86	Ocimene <trans-, beta->
21	10.115	5256293	0.14	Terpinene <gamma->
22	10.425	4744246	0.13	Sabinene hydrate <trans->
23	10.537	2218198	0.06	Linalool oxide <cis->
24	10.694	2278546	0.06	1-Octanol

Peak#	R.Time	Area	Area%	Name
25	10.961	8989794	0.24	Terpinolene
26	11.098	2224369	0.06	Epoxyterpinene<6,7->
27	11.654	1703092694	45.51	Linalool*
28	12.079	3757677	0.10	Menth-2-en-1-ol <cis-, para->
29	12.264	1604337	0.04	Myroxide <(Z)->
30	12.528	7196214	0.19	Myroxide <(E)->
31	12.661	21283013	0.57	Camphor
32	12.905	465254	0.01	Menthone
33	13.192	1249139	0.03	Isomenthone
34	13.307	12852649	0.34	Terpineol <delta->
35	13.596	24502489	0.65	Terpinen-4-ol
36	13.873	471954	0.01	Cymen-8-ol <para->
37	14.003	37764341	1.01	Terpineol <alpha->
38	14.156	45045237	1.20	Estragole
39	14.425	13745674	0.37	Acetate <octyl->
40	14.965	6706785	0.18	Citronellol*
41	15.306	702916	0.02	Neral
42	15.420	1810357	0.05	Carvone
43	15.637	1678291	0.04	Linalyl acetate
44	15.679	5398751	0.14	Geraniol*
45	16.109	644101	0.02	Geranial
46	16.193	897940	0.02	Citronellyl format
47	16.532	47211365	1.26	Bornyl acetate
48	16.898	1661788	0.04	Pinocarvyl acetate <trans->
49	17.900	2954955	0.08	Elemene <delta->
50	18.006	3986898	0.11	Hydroxycineole acetate <exo-2->
51	18.227	3557357	0.10	Cubebene <alpha->
52	18.579	200753844	5.36	Eugenol**
53	18.956	6658879	0.18	Copaene <alpha->
54	19.047	1530572	0.04	Geranyl acetate
55	19.201	17264394	0.46	Bourbonene <beta->
56	19.398	102424875	2.74	Elemene <beta->
57	19.471	3117737	0.08	Cubebene <beta->
58	19.643	3764031	0.10	Methyleugenol
59	19.829	271489	0.01	Gurjunene <alpha->
60	19.921	4077986	0.11	Bergamotene <alpha-, cis->
61	20.097	12013481	0.32	Caryophyllene
62	20.153	1791424	0.05	Ylangene <beta->
63	20.258	1055729	0.03	Thujopsene <cis->
64	20.326	1500502	0.04	Copaene <beta->
65	20.494	235101823	6.28	Bergamotene <alpha-, trans->
66	20.616	2174386	0.06	Sesquisabinene
67	20.774	9854045	0.26	Muurola-3,5-diene<trans->
68	20.905	4779412	0.13	Farnesene <(E)-, beta-
69	20.977	31601149	0.84	Humulene <alpha->
70	21.193	17191948	0.46	Muurola-4(14),5-diene <cis->
71	21.269	2590936	0.07	Acoradiene <beta->
72	21.464	1562970	0.04	Acoradiene <10-epi-beta->
73	21.680	129342871	3.46	Germacrene D
74	21.814	5917686	0.16	Selinene <beta->
75	22.026	45015021	1.20	Bicyclgermacrene
76	22.233	55488364	1.48	Bulnesene <alpha->
77	22.468	89575548	2.39	Cadinene <gamma->
78	22.617	20681417	0.55	Calamenene <trans-> + Sesquiphellandrene <
79	22.842	2613140	0.07	Cubebol<10-epi->
80	22.979	3045694	0.08	Cadinene <alpha->
81	23.096	1240165	0.03	Sesquisabinene hydrate <cis->
82	23.248	874325	0.02	Murol-5-en-4-beta-ol <cis->
83	23.380	671920	0.02	Geranyl butyrate
84	23.532	6668691	0.18	Nerolidol <(E)->
85	23.761	5809687	0.16	Maaliol
86	23.990	215249	0.01	Germacrene D-4-ol \$
87	24.046	3840208	0.10	Spathulenol
88	24.231	2230973	0.06	Globulol
89	24.453	2161948	0.06	Viridiflorol
90	24.924	1440744	0.04	Humulene epoxide II
91	25.084	18137026	0.48	Diepicubenol <1,10->
92	25.240	1105520	0.03	Eudesmol <epi-gamma->
93	25.842	93433304	2.50	Murolol <alpha->

Peak#	R.Time	Area	Area%	Name
94	26.071	2373059	0.06	Eudesmol <beta->
95	26.137	4218249	0.11	Cadinol <alpha->
96	26.424	1430974	0.04	Bisabolol<epi-beta->
97	26.795	3936552	0.11	Bisabolol <epi- alpha-> + Bisabolol <alpha->
98	27.023	895934	0.02	Geranyl tiglate
99	27.896	1982050	0.05	Unknown
100	28.328	600150	0.02	Benzyl benzoate*
101	29.478	926460	0.02	Phytone
102	30.187	234569	0.01	Linolenate <methyl->
103	32.741	2622583	0.07	Phytol
104	36.838	2653678	0.07	Squalene
		3742186937	100.00	

Kosmetiniai alergenai: \*-silpnas, \*\*-vidutinio stiprumo, \*\*\*- stiprus alergenai

Analiz atliko

dr. Jurga B dien