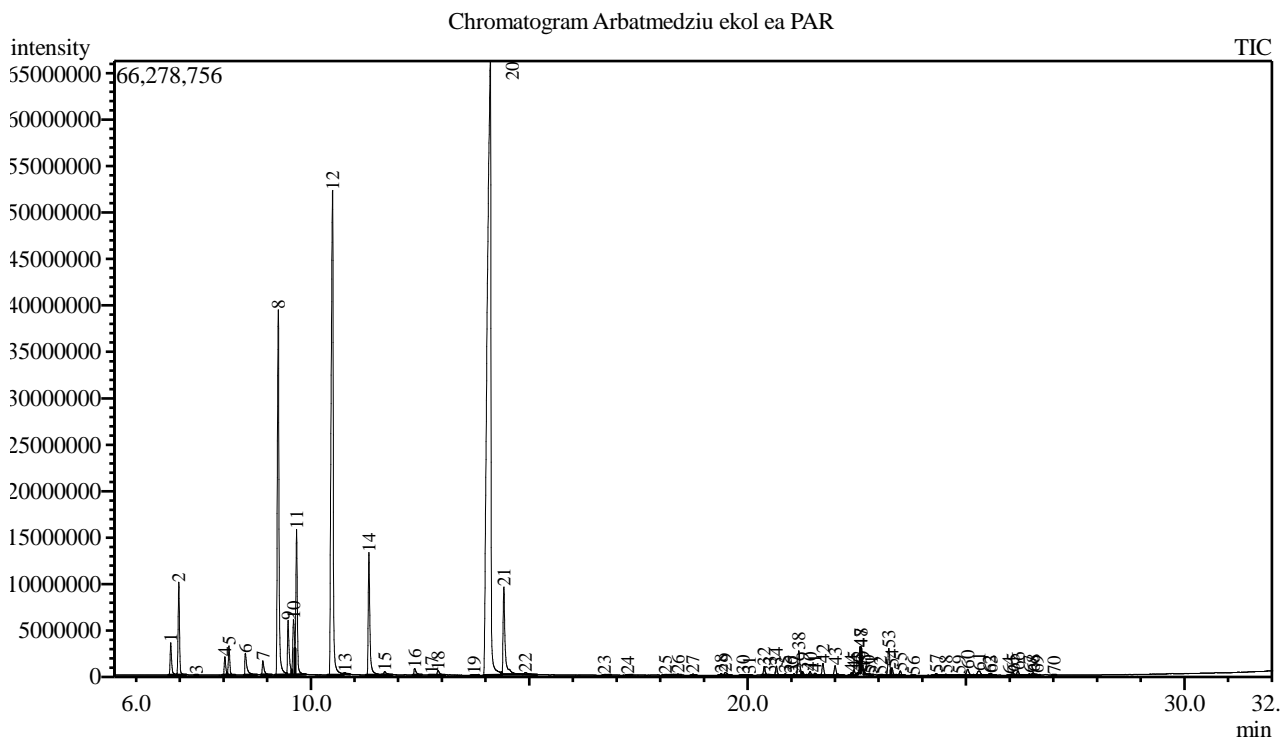


Analysis numb.: GC1372  
 Analysis date: 2022 06 13  
 Sample name: Arbatmedziu (prazangiuju mirteniū) ekol ea  
 Botanical name: Melaleuca alternifolia  
 Sample batch num: TEAO0421EEO  
 Sample origin: PAR  
 Best before: 2026 03



Peak Report TIC

Peak#	R.Time	Area	Area%	Name
1	6.793	8336252	0.89	Thujene <alpha->
2	6.978	22406809	2.39	Pinene <alpha->
3	7.379	86048	0.01	Camphene
4	8.033	4734084	0.51	Sabinene
5	8.127	7321204	0.78	Pinene <beta->
6	8.501	7617024	0.81	Myrcene
7	8.902	4475403	0.48	Phellandrene <alpha->
8	9.255	103346447	11.03	Terpinene <alpha->
9	9.479	15499836	1.65	Cymene <para->
10	9.604	16458835	1.76	Limonene* + sylvestene
11	9.673	38287737	4.09	Eucalyptol
12	10.499	176053338	18.79	Terpinene <gamma->
13	10.780	422222	0.05	Sabinene hydrate <cis->
14	11.330	35512996	3.79	Terpinolene
15	11.691	1392327	0.15	Sabinene hydrate <trans->
16	12.377	2472208	0.26	Menth-2-en-1-ol <cis-, para->
17	12.764	152866	0.02	Terpin-3-en-1-ol
18	12.913	1845457	0.20	Menth-2-en-1-ol <trans-para->
19	13.734	189893	0.02	Borneol
20	14.109	389157532	41.53	Terpinen-4-ol
21	14.419	30626909	3.27	Terpineol <alpha->
22	14.915	1125496	0.12	Piperitol <cis->
23	16.726	448885	0.05	Unknown
24	17.259	214816	0.02	Ascaridol glycol <trans->

Peak#	R.Time	Area	Area%	Name
25	18.113	621139	0.07	Unknown
26	18.410	291611	0.03	Elemene <delta->
27	18.749	409178	0.04	Cubebene <alpha->
28	19.397	524367	0.06	Isoledene
29	19.491	1500525	0.16	Copaene <alpha->
30	19.896	256134	0.03	Elemene <beta->
31	20.045	209398	0.02	Unknown
32	20.384	2683987	0.29	Gurjunene <alpha->
33	20.514	141996	0.02	Unknown
34	20.662	2832053	0.30	Caryophyllene <(E)->
35	20.863	452586	0.05	Maaliene <gamma->
36	20.988	100055	0.01	Calarene
37	21.062	479330	0.05	Maaliene <alpha->
38	21.173	8590457	0.92	Aromadendrene
39	21.259	1151222	0.12	Myltayal-4(12)-ene
40	21.434	1285009	0.14	Muurola-3,5-diene <trans->
41	21.543	861327	0.09	Humulene <alpha->
42	21.726	3664695	0.39	Alloaromadendrene
43	22.004	3429116	0.37	Muurola-4(14),5-diene <cis->
44	22.377	796356	0.08	Unknown
45	22.437	1663471	0.18	Guaiene <cis-beta->
46	22.514	202357	0.02	Muurola4(14),5-diene <trans->
47	22.584	4899640	0.52	Viridiflorene
48	22.594	5654855	0.60	Bicyclogermacrene
49	22.660	767717	0.08	Muurolene <alpha->
50	22.758	127105	0.01	Farnesene <(E,E)-, alpha->
51	22.837	141764	0.02	Amorphene <delta->
52	23.038	98837	0.01	Cadinene <gamma->
53	23.235	8639995	0.92	Cadinene <delta->
54	23.305	2162924	0.23	Zonarene
55	23.497	1487104	0.16	Cadina-1,4-diene <trans->
56	23.797	56834	0.01	Calacorene <alpha->
57	24.321	790896	0.08	Maaliol
58	24.544	735658	0.08	Palustrol
59	24.841	391823	0.04	Spathulenol
60	25.039	2773067	0.30	Globulol
61	25.295	2507544	0.27	Viridiflorol
62	25.534	528170	0.06	Rosifoliol
63	25.577	384718	0.04	Ledol
64	25.983	55474	0.01	Junenol
65	26.075	1080944	0.12	Eudesmol <5-epi-7-epi-alpha-> + Unknown
66	26.190	1596233	0.17	Diepicubenol <1,10->
67	26.453	517845	0.06	Unknown
68	26.540	863384	0.09	Epicubenol
69	26.622	332459	0.04	T-Muurolo + Muurolol <alpha->
70	27.014	98535	0.01	Patchouli alcohol
		937024518	100.00	

Kosmetiniai alergenai: \*-silpnas, \*\*-vidutinio stiprumo, \*\*\*- stiprus alergenai

Analiz atliko

dr. Jurga B dien