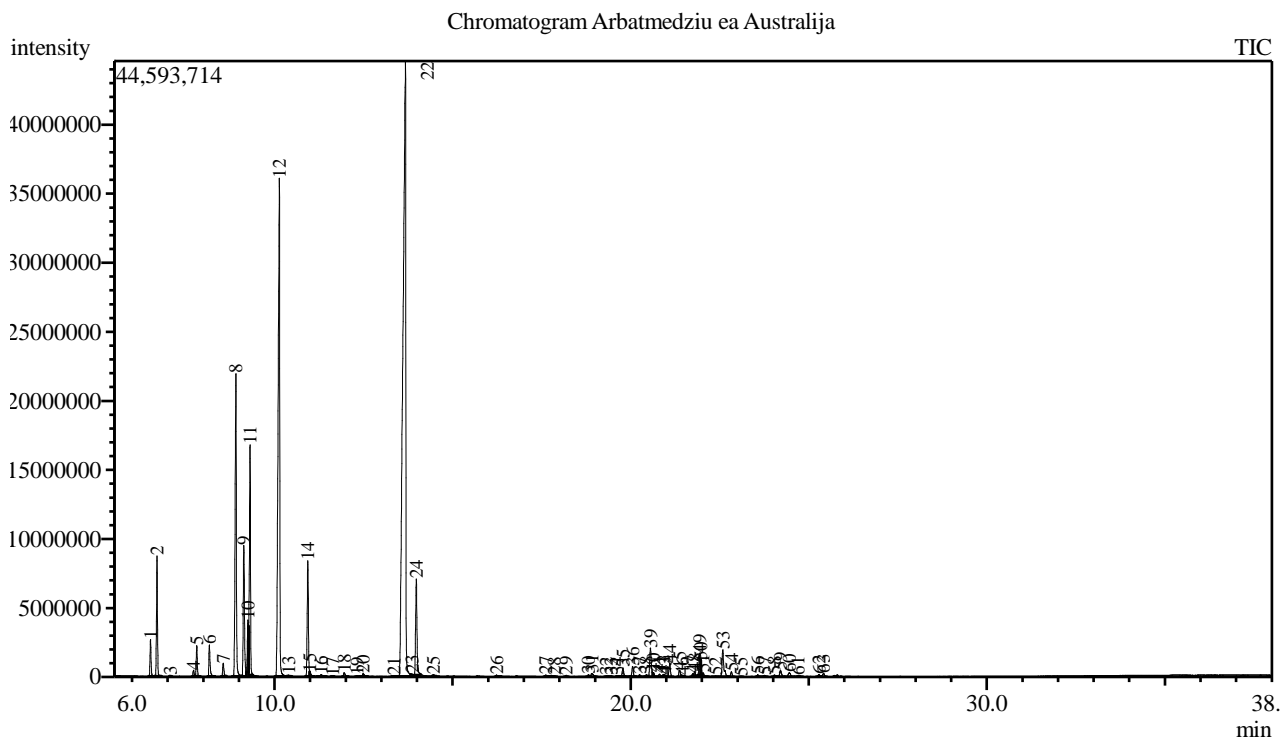


Analysis numb.: GC1003  
 Analysis date: 2020 10 14  
 Sample name: Arbatmedziu ea  
 Botanical name: Melaleuca alternifolia  
 Sample batch num: P222110  
 Sample origin: Australija  
 Best before: 2025 03



Peak Report TIC

Peak#	R.Time	Area	Area%	Name
1	6.517	5493965	0.91	Thujene <alpha->
2	6.700	16942714	2.79	Pinene <alpha->
3	7.081	73698	0.01	Camphene
4	7.725	974014	0.16	Sabinene
5	7.816	4617497	0.76	Pinene <beta->
6	8.170	5160977	0.85	Myrcene
7	8.559	2257097	0.37	Phellandrene <alpha->
8	8.915	55045363	9.07	Terpinene <alpha->
9	9.140	23194329	3.82	Cymene <para->
10	9.254	8301372	1.37	Limonene*
11	9.312	36261547	5.98	Eucalyptol
12	10.136	116647530	19.23	Terpinene <gamma->
13	10.393	142335	0.02	Sabinene hydrate <cis->
14	10.934	19564397	3.23	Terpinolene
15	10.990	682008	0.11	Cymenene <para->
16	11.313	534514	0.09	Linalool*
17	11.632	50003	0.01	Menthatriene <1,3,8-para->
18	11.956	883086	0.15	Menth-2-en-1-ol <cis-, para->
19	12.316	198625	0.03	Unknown
20	12.491	701080	0.12	Menth-2-en-1-ol <trans-para->
21	13.359	130875	0.02	Borneol + Terpeneol <delta->
22	13.677	247973234	40.88	Terpinen-4-ol
23	13.865	669420	0.11	Cymen-8-ol <para->
24	13.982	18902367	3.12	Terpineol <alpha->

Peak#	R.Time	Area	Area%	Name
25	14.457	355344	0.06	Piperitol<cis->
26	16.234	383439	0.06	Ascaridol glycol<trans->
27	17.615	486936	0.08	Unknown
28	17.855	166225	0.03	Elemene <delta->
29	18.189	254525	0.04	Cubebene <alpha->
30	18.818	350281	0.06	Isoledene
31	18.911	1002922	0.17	Copaene <alpha->
32	19.318	119018	0.02	Elemene <beta->
33	19.448	169680	0.03	Unknown
34	19.620	82513	0.01	Methyl eugenol
35	19.784	1700855	0.28	Gurjunene <alpha->
36	20.056	2032272	0.34	Caryophyllene
37	20.254	338825	0.06	Guaiene <alpha->
38	20.447	383256	0.06	Maaliene <alpha->
39	20.556	6432875	1.06	Aromadendrene
40	20.644	698899	0.12	Mylytayl-4(12)-ene
41	20.812	533865	0.09	Muurola-3,5-diene <trans->
42	20.917	411306	0.07	Humulene <alpha->
43	20.962	104173	0.02	Valerena-4,7(11)-diene
44	21.098	2624625	0.43	Alloaromadendrene
45	21.375	1389762	0.23	Cadina-1(6),4-diene<trans->
46	21.447	152411	0.03	Muurolene <gamma->
47	21.742	484010	0.08	Selinene <beta->
48	21.799	1025115	0.17	Selinene <delta->
49	21.940	4346167	0.72	Viridiflorene
50	21.970	1022908	0.17	Bicyclogermacrene
51	22.035	679677	0.11	Muurolene <alpha->
52	22.394	133490	0.02	Cadinene <gamma->
53	22.589	6579069	1.08	Cadinene <delta->
54	22.829	964998	0.16	Cadina-1,4-diene <trans->
55	23.099	62000	0.01	Calacorene <alpha->
56	23.569	411674	0.07	Epiglobulol
57	23.764	366331	0.06	Palustrol
58	24.040	378955	0.06	Spathulenol
59	24.211	1551500	0.26	Viridiflorol
60	24.457	1254501	0.21	Cubeban-11-ol
61	24.703	463439	0.08	Rosifoliol
62	25.286	525500	0.09	Eudesmol <beta->
63	25.415	770499	0.13	Cubenol
		606595887	100.00	

Kosmetiniai alergenai: \*-silpnas, \*\*-vidutinio stiprumo, \*\*\*- stiprus alergenai

Analiz atliko

dr. Jurga B dien