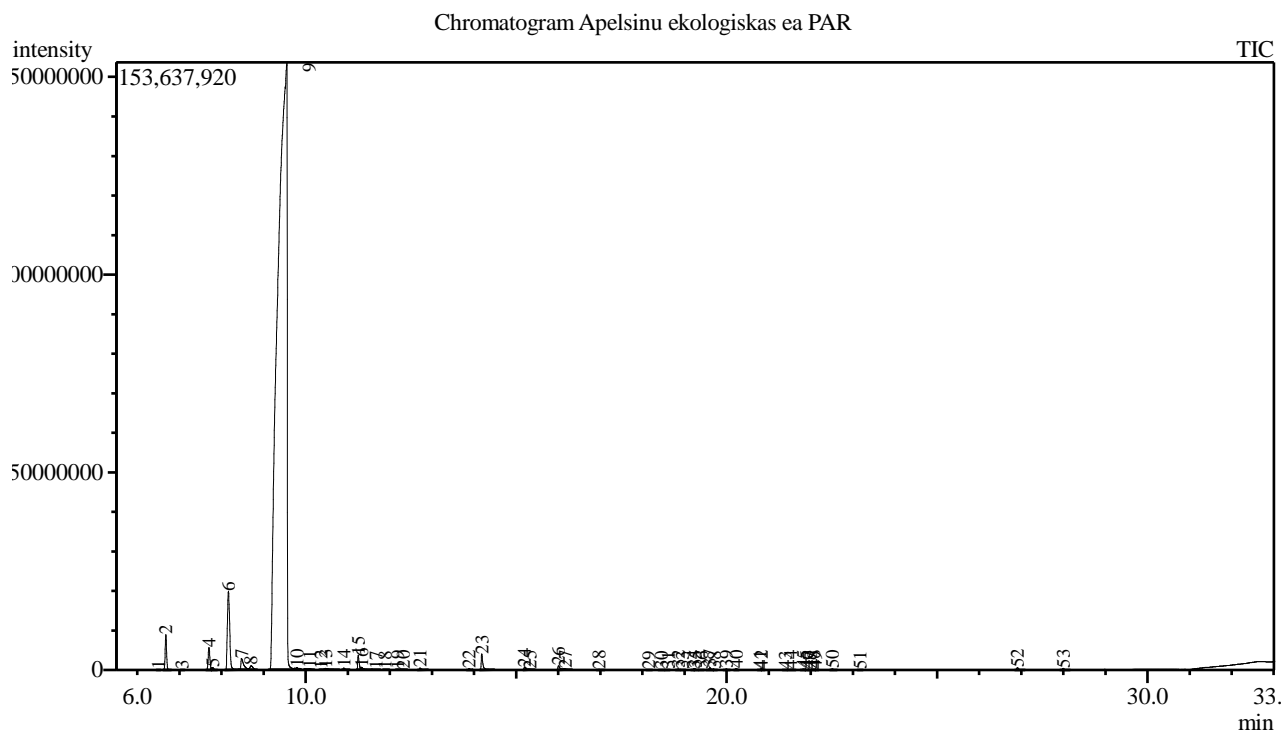


Analysis numb.: GC831
 Analysis date: 2020 01 20
 Sample name: Apelsin ekologiškas ea
 Botanical name: Citrus x sinensis
 Sample batch num: ORGVO0919SO
 Sample origin: PAR
 Best before: 2021 09



Peak Report TIC

Peak#	R.Time	Area	Area%	Name
1	6.499	170180	0.01	Thujene <alpha->
2	6.678	20388197	0.80	Pinene <alpha->
3	7.063	130312	0.01	Camphene
4	7.702	16083013	0.63	Sabinene
5	7.792	1635584	0.06	Pinene <beta->
6	8.164	76367231	3.01	Myrcene
7	8.476	13075634	0.51	Octanal
8	8.700	4831748	0.19	Carene <delta-3->
9	9.555	2358918444	92.85	Limonene*
10	9.792	805740	0.03	Ocimene <trans-, beta->
11	10.095	497137	0.02	Terpinene <gamma->
12	10.361	143719	0.01	Sabinene hydrate <cis->
13	10.477	2069794	0.08	1-Octanol
14	10.910	1027756	0.04	Terpinolene
15	11.250	9016155	0.35	Linalool*
16	11.333	2379920	0.09	Nonanal
17	11.674	275320	0.01	Nona-1,3,7-triene <4,8-dimethyl-, (E)->
18	11.888	124899	0.00	Mentha-2,8-dien-1-ol <trans-, para->
19	12.192	240525	0.01	Limonene oxide <cis->
20	12.318	436216	0.02	Limonene oxide <trans->
21	12.719	1392309	0.05	Citronellal
22	13.887	884459	0.03	Terpineol <alpha->
23	14.186	10994400	0.43	Decanal <n->
24	15.203	2068403	0.08	Neral

Peak#	R.Time	Area	Area%	Name
25	15.333	416033	0.02	Carvone
26	16.008	3592629	0.14	Geranial
27	16.173	731079	0.03	Perillaldehyde
28	16.974	362943	0.01	Undecanal
29	18.152	98408	0.00	Citronellyl acetate
30	18.451	176050	0.01	Neryl acetate
31	18.613	69166	0.00	Cyclosativene
32	18.855	539454	0.02	Copaene <alpha->
33	18.947	153819	0.01	Geranyl acetate
34	19.207	401602	0.02	Cubebene <beta->
35	19.259	503664	0.02	Elemene <beta->
36	19.402	82231	0.00	Sativen
37	19.606	1608785	0.06	Dodecanal
38	19.713	158623	0.01	Unknown
39	19.995	592480	0.02	Caryophyllene <(E)->
40	20.232	779496	0.03	Copaene <beta->
41	20.800	401935	0.02	Farnesene <(E)-, beta->
42	20.830	254759	0.01	Humulene <alpha->
43	21.397	123426	0.00	Muurolene <gamma->
44	21.530	461311	0.02	Germacrene D
45	21.824	518152	0.02	Valencene
46	21.902	162559	0.01	Bicyclgermacrene
47	21.973	126349	0.00	Muurolene <alpha->
48	22.067	515821	0.02	Farnesene <(E,E)-, alpha->
49	22.113	94037	0.00	Bisabolene <beta->
50	22.516	648954	0.03	Cadinene <delta->
51	23.174	199241	0.01	Elemol <alpha->
52	26.915	1750156	0.07	Sinensal <beta->
53	27.999	1098652	0.04	Sinensal <alpha->
		2540578909	100.00	

Kosmetiniai alergenai: *-silpnas, **-vidutinio stiprumo, ***- stiprus alergenai

Analiz atliko

dr. Jurga B dien