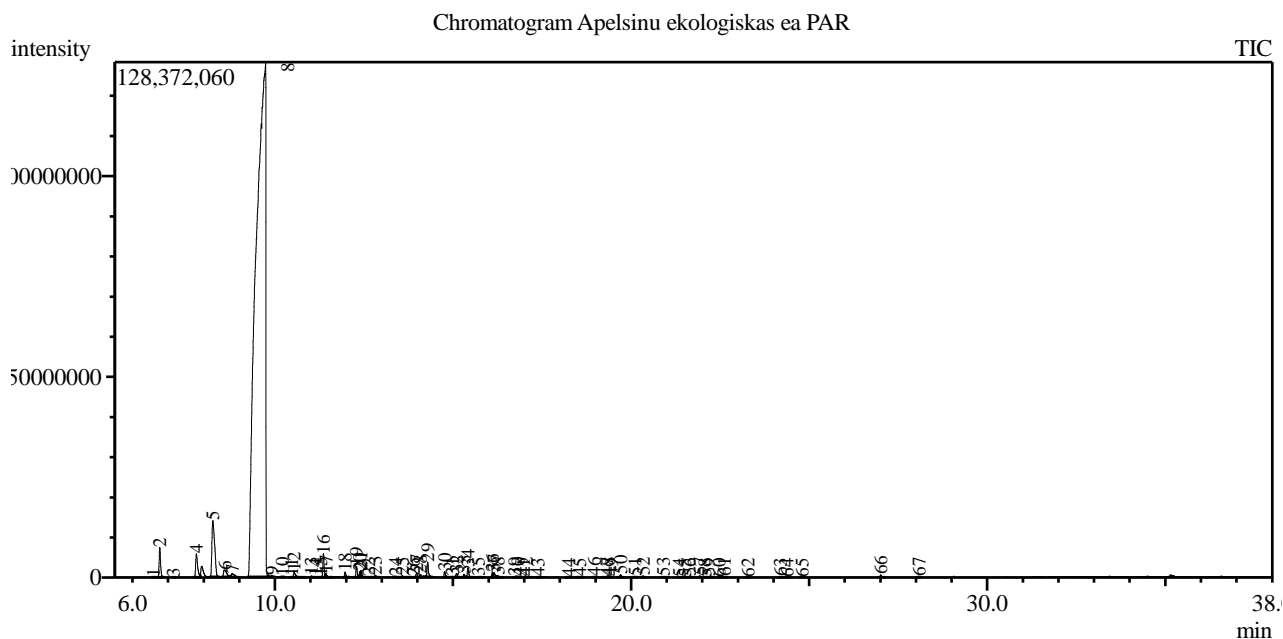


Analysis numb.: GC422
 Analysis date: 2017 03 20
 Sample name: Apelsin ekologiškas ea
 Botanical name: Citrus sinensis (sweet Orange)
 Sample batch num: ORGV1016SO
 Sample origin: South Africa Republic
 Best before: 2019 11



Peak Report TIC

Peak#	R.Time	Area	Area%	Name
1	6.583	163374	0.01	Thujene <alpha->
2	6.767	20406622	0.78	Pinene <alpha->
3	7.148	74642	0.00	Camphene
4	7.795	22349670	0.85	Sabinene
5	8.258	75301571	2.87	Myrcene
6	8.583	10754370	0.41	Octanal
7	8.799	5464664	0.21	Carene <delta-3->
8	9.738	2388802716	91.10	Limonene*
9	9.918	630294	0.02	Ocimene <trans-, beta->
10	10.213	221915	0.01	Terpinene <gamma->
11	10.476	299307	0.01	sabinene hydrate <cis->
12	10.539	5378709	0.21	1-Octanol
13	11.023	806224	0.03	Terpinolene
14	11.137	318207	0.01	Epoxymyrcene<6,7->
15	11.287	388074	0.01	Undecane
16	11.365	14086379	0.54	Linalool*
17	11.436	2685022	0.10	Nonanal
18	11.971	3383096	0.13	Mentha-2,8-dien-1-ol <trans-, para->
19	12.294	6435869	0.25	Limonene oxide <cis->
20	12.382	2291631	0.09	Mentha-2,8-dien-1-ol <para, cis->
21	12.419	3631602	0.14	Limonene oxide <trans->
22	12.630	372420	0.01	Camphor
23	12.822	1274883	0.05	Citronellal
24	13.394	939773	0.04	Nonanol
25	13.577	1095623	0.04	Unknown
26	13.890	609657	0.02	Cymen-8-ol <para->
27	13.979	2822295	0.11	Terpineol <alpha->
28	14.091	1994508	0.08	Unknown
29	14.289	9846544	0.38	Decanal

Peak#	R.Time	Area	Area%	Name
30	14.768	4046626	0.15	Carveol <trans->
31	14.984	788268	0.03	Citronellol*
32	15.100	2683272	0.10	Carveol <cis->
33	15.307	1941929	0.07	Neral
34	15.420	6366179	0.24	Carvone
35	15.711	577694	0.02	Geraniol*
36	16.106	2522812	0.10	Geranial
37	16.152	3865725	0.15	Decyl alcohol
38	16.259	1229000	0.05	Perillaldehyde
39	16.734	411080	0.02	Limonen-10-ol
40	16.825	1063600	0.04	Tridecane
41	16.973	438510	0.02	Perilla alcohol
42	17.065	527780	0.02	Undecanal <n->
43	17.385	130761	0.00	Decadienal <(2E,4E)->
44	18.253	163182	0.01	Citronellyl acetate
45	18.554	601157	0.02	Neryl acetate
46	18.962	611761	0.02	Copaene <alpha->
47	19.317	576790	0.02	Cubebene <beta->
48	19.366	542626	0.02	Elemene <beta->
49	19.443	324485	0.01	Tetradecane
50	19.705	1804238	0.07	Dodecanal <n->
51	20.108	638057	0.02	Caryophyllene
52	20.340	920292	0.04	Copaene <beta->
53	20.908	751894	0.03	Farnesene <(E)-, beta->
54	21.360	92089	0.00	Dodecanol
55	21.503	157154	0.01	Muurolene <gamma->
56	21.639	289303	0.01	Germacrene D
57	21.931	991024	0.04	Valencene
58	22.076	140689	0.01	Muurolene <alpha->
59	22.172	514753	0.02	Farnesene <(E,E)-, alpha->
60	22.477	124201	0.00	Cubebol
61	22.619	651745	0.02	Cadinene <delta->
62	23.280	181707	0.01	Elemol <alpha->
63	24.192	235005	0.01	Caryophyllene oxide
64	24.380	136950	0.01	Hexadecane
65	24.798	111793	0.00	Tetradecanal
66	27.013	1498987	0.06	Sinensal <beta->
67	28.084	578388	0.02	Sinensal <alpha->
		2622061167	100.00	

Kosmetiniai alergenai: *-silpnas, **-vidutinio stiprumo, ***- stiprus alergenai

Analiz atliko

dr. Jurga B dien