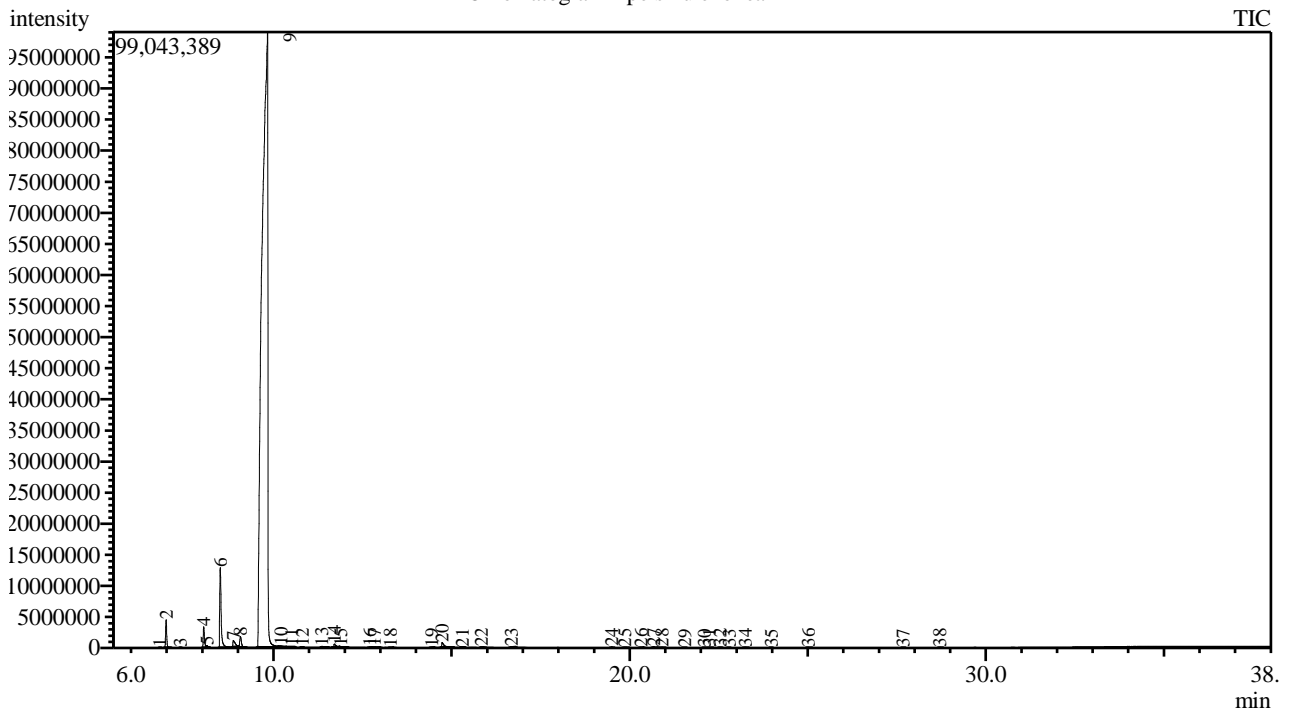


Analysis numb.: GC1339
 Analysis date: 2022 04 13
 Sample name: Apelsinu ekol ea
 Botanical name: Citrus x sinensis
 Sample batch num: ORGNO1221SO
 Sample origin: PAR
 Best before: 2023 12

Chromatogram Apelsinu ekol ea PAR



Peak Report TIC

Peak#	R.Time	Area	Area%	Name
1	6.811	48260	0.00	Thujene <alpha->
2	6.984	9583296	0.80	Pinene <beta->
3	7.384	48477	0.00	Camphene
4	8.040	8018066	0.67	Sabinene
5	8.137	787322	0.07	Pinene <beta->
6	8.504	36508867	3.06	Myrcene
7	8.870	4675502	0.39	Octanal <n->
8	9.072	5791107	0.49	Carene <delta-3->
9	9.832	1115005776	93.40	Limonene*
10	10.210	195944	0.02	Ocimene <(E)-, beta->
11	10.507	123094	0.01	Terpinene <gamma->
12	10.806	57448	0.00	Sabinene hydrate <cis->
13	11.359	702403	0.06	Terpinolene
14	11.710	2510843	0.21	Linalool*
15	11.890	701757	0.06	Nonanal
16	12.701	373868	0.03	Limonene oxide <cis->
17	12.833	523125	0.04	Limonene oxide <trans->
18	13.282	242927	0.02	Citronellal
19	14.438	159452	0.01	Terpineol <alpha->
20	14.738	3935466	0.33	Decanal <n->
21	15.302	81689	0.01	Carveol <trans->
22	15.837	255296	0.02	Neral
23	16.681	621360	0.05	Geranial
24	19.499	245407	0.02	Copaene <alpha->

Peak#	R.Time	Area	Area%	Name
25	19.859	264930	0.02	Cubebene <beta->
26	20.320	328728	0.03	Dodecanal
27	20.672	547174	0.05	Caryophyllene
28	20.910	225189	0.02	Copaene <beta->
29	21.549	83918	0.01	Humulene <alpha->
30	22.092	29476	0.00	Muurolene <gamma->
31	22.241	175495	0.01	Germacrene D
32	22.539	200223	0.02	Valencene
33	22.793	32644	0.00	Farnesene <(E,E)-, alpha->
34	23.244	213678	0.02	Cadinene <delta->
35	23.974	71397	0.01	Elemol <alpha->
36	25.013	117461	0.01	Caryophyllene oxide
37	27.677	104850	0.01	Sinensal <beta->
38	28.704	141513	0.01	Sinensal <alpha->
		1193733428	100.00	

Kosmetiniai alergenai: *-silpnas, **-vidutinio stiprumo, ***- stiprus alergenai

Analiz atliko

dr. Jurga B dien