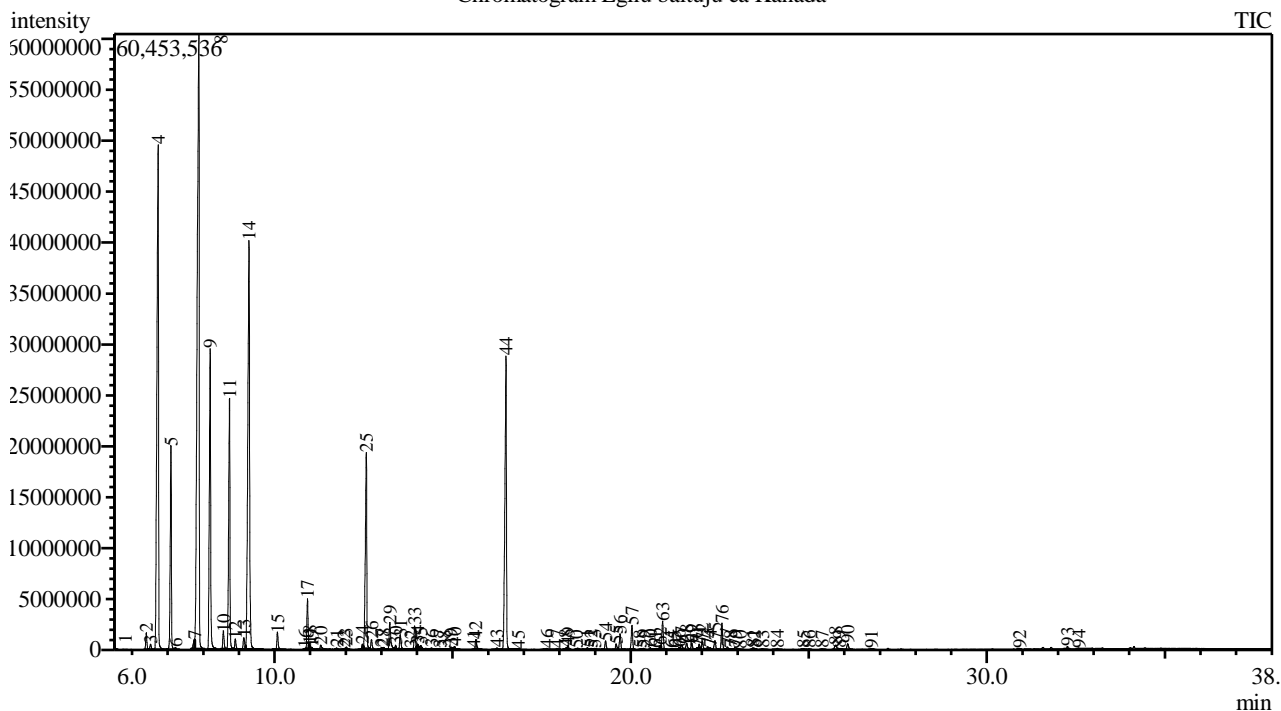


Analysis numb.: GC987
 Analysis date: 2020 09 21
 Sample name: Egliu baltuju ea
 Botanical name: Picea glauca
 Sample batch num: BPIGLCAN03U
 Sample origin: Kanada
 Best before: 2022 01

Chromatogram Egliu baltuju ea Kanada



Peak Report TIC

Peak#	R.Time	Area	Area%	Name
1	5.509	1209003	0.12	Santene
2	6.400	3776107	0.38	Tricyclene
3	6.519	1393295	0.14	Thujene <alpha->
4	6.733	155531649	15.61	Pinene <alpha->
5	7.092	45274993	4.54	Camphene
6	7.220	541436	0.05	Thuja-2,4(10)-diene
7	7.757	2118790	0.21	Sabinene
8	7.875	237725398	23.85	Pinene <beta->
9	8.193	75679568	7.59	Myrcene
10	8.568	4345735	0.44	Phellandrene <alpha->
11	8.737	63321839	6.35	Carene <delta-3->
12	8.902	2684195	0.27	Terpinene <alpha->
13	9.143	3883776	0.39	Cymene <para->
14	9.285	140631351	14.11	Limonene*+ Phellandrene <beta-> + Sylvestr
15	10.086	4236470	0.43	Terpinene <gamma->
16	10.857	223965	0.02	Mentha-2,4(8)-diene <para->
17	10.925	11337555	1.14	Terpinolene
18	10.987	650925	0.07	Cymenene <para->
19	11.053	265519	0.03	Camphenone <6->
20	11.303	2110722	0.21	Linalool*
21	11.750	588245	0.06	Fenchol <endo->
22	11.948	144214	0.01	Menth-2-en-1-ol <cis-, para->
23	12.015	679825	0.07	Campholenal<alpha->
24	12.468	1320715	0.13	Pinocarveol <trans->

Peak#	R.Time	Area	Area%	Name
25	12.577	54488472	5.47	Camphor
26	12.727	2784504	0.28	Camphene hydrate
27	13.009	647264	0.06	Pinocamphone <trans->
28	13.067	617855	0.06	Pinocarvone
29	13.242	8577534	0.86	Borneol
30	13.406	1246951	0.13	Pinocamphone <cis->
31	13.540	4191038	0.42	Terpinen-4-ol
32	13.833	537367	0.05	Cymen-8-ol <para->
33	13.933	6002004	0.60	Terpineol <alpha->
34	14.022	771162	0.08	Myrtenal
35	14.113	1714229	0.17	Myrtenol + Methyl chavicol
36	14.410	877571	0.09	Verbenone
37	14.644	438665	0.04	Fenchyl acetate
38	14.765	261032	0.03	Unknown
39	14.956	1075233	0.11	Citronellol*
40	15.060	965261	0.10	Thymol methyl ether
41	15.585	90551	0.01	Linalyl acetate
42	15.650	2809166	0.28	Piperitone
43	16.248	733754	0.07	Phellandral
44	16.500	88134664	8.84	Bornyl acetate
45	16.847	288139	0.03	Pinocarvyl acetate <trans->
46	17.652	444484	0.04	Unknown
47	17.937	477791	0.05	Menthol<8-hydroxy-neo->
48	18.180	482616	0.05	Citronellyl acetate
49	18.241	993666	0.10	Longipinene <alpha->
50	18.475	298177	0.03	Eugenol**
51	18.791	729499	0.07	Cyclosativene
52	18.887	380510	0.04	Copaene <alpha->
53	18.986	391942	0.04	Geranyl acetate
54	19.300	2532484	0.25	Elemene <beta->
55	19.596	1625260	0.16	Methyleugenol
56	19.708	4360641	0.44	Longifolene
57	20.036	6355106	0.64	Caryophyllene
58	20.264	149356	0.01	Copaene <beta->
59	20.365	432690	0.04	Bergamotene <alpha-, trans->
60	20.553	546732	0.05	Sesquisabinene
61	20.695	84896	0.01	Muurola-3,5-diene<trans->
62	20.834	1038948	0.10	Farnesene <(E)-, beta->
63	20.897	7385213	0.74	Humulene <alpha->
64	21.128	395110	0.04	Muurola-4(14),5-diene <cis->
65	21.220	369243	0.04	Acoradiene <beta->
66	21.357	418255	0.04	Cadina-1(6),4-diene <trans->
67	21.431	1347491	0.14	Murolene <gamma->
68	21.577	2296338	0.23	Germacrene D
69	21.721	1787104	0.18	Selinene <beta->
70	21.855	396616	0.04	Amorphene <gamma->
71	21.923	867465	0.09	Selinene <alpha->
72	22.016	2336271	0.23	Murolene <alpha->
73	22.162	570918	0.06	Bisabolene <beta->
74	22.237	438326	0.04	Curcumene <beta->
75	22.370	2772420	0.28	Cadinene <gamma->
76	22.567	7281927	0.73	Cadinene <delta->
77	22.724	692270	0.07	Bisabolene <(E)-gamma->
78	22.807	313808	0.03	Cadina-1,4-diene <trans->
79	22.940	954959	0.10	Cadinene <alpha->
80	23.073	188817	0.02	Calacorene <alpha->
81	23.422	374333	0.04	Germacrene B
82	23.475	240384	0.02	Nerolidol <(E)->
83	23.705	273837	0.03	Hexenyl benzoate <(3Z)->
84	24.120	446924	0.04	Caryophyllene oxide
85	24.858	371556	0.04	Humulene epoxide II
86	25.011	187634	0.02	Cubenol
87	25.377	272612	0.03	Epicubenol
88	25.757	1852522	0.19	T-Murolol
89	25.863	256943	0.03	Murolol <alpha->
90	26.100	2111227	0.21	Cadinol <alpha->
91	26.761	252137	0.03	Bisabolol<epi-alpha->
92	30.924	199319	0.02	Camphorene <m->
93	32.271	549494	0.06	Manool

Peak#	R.Time	Area	Area%	Name
94	32.593	95152	0.01	Abietadiene
		996549129	100.00	

Kosmetiniai alergenai: *-silpnas, **-vidutinio stiprumo, ***- stiprus alergenai

Analiz atliko

dr. Jurga B dien