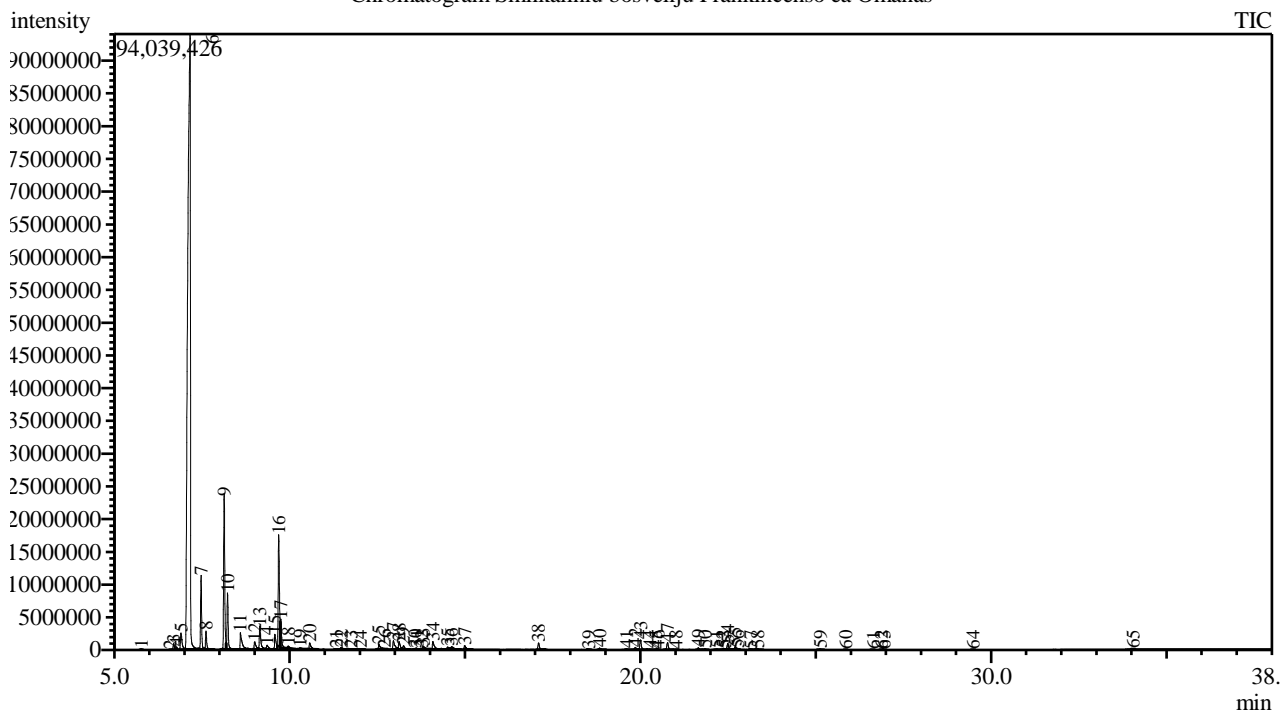


Analysis numb.: GC188
 Analysis date: 2021 10 18
 Sample name: Smilkaliniu bosveliju (Frankincenso) ea
 Botanical name: Boswellia sacra
 Sample batch num: 2021 10 18
 Sample origin: Omanas
 Best before:

Chromatogram Smilkaliniu bosveliju Frankincenso ea Omanas



Peak Report TIC

Peak#	R.Time	Area	Area%	Name
1	5.767	166689	0.02	Unknown
2	6.597	101216	0.01	Pyrene <alpha->
3	6.692	2068010	0.28	Unknown
4	6.775	958564	0.13	Tricyclene
5	6.901	8389402	1.12	Thujene <alpha->
6	7.159	492967930	65.71	Pinene <alpha->
7	7.477	23490083	3.13	Camphene
8	7.617	6544871	0.87	Thuja-2,4(10)-diene
9	8.135	53565714	7.14	Sabinene
10	8.231	19948942	2.66	Pinene <beta->
11	8.595	9528652	1.27	Myrcene
12	9.005	4172558	0.56	Phellandrene <alpha->
13	9.152	10513917	1.40	Carene <delta-3->
14	9.359	2890945	0.39	Terpinene <alpha->
15	9.581	6972003	0.93	Cymene <alpha->
16	9.688	40047521	5.34	Limonene*
17	9.746	10197778	1.36	Eucalyptol
18	9.960	1590675	0.21	Ocimene <(Z)-, beta->
19	10.296	1132232	0.15	Ocimene <(E)-, beta->
20	10.573	3493277	0.47	Terpinene <gamma->
21	11.326	239668	0.03	Linalool oxide <trans-> + Unknown
22	11.479	1719828	0.23	Terpinolene
23	11.745	672355	0.09	Pinene oxide <alpha->
24	12.014	497379	0.07	Unknown

Peak#	R.Time	Area	Area%	Name
25	12.547	2539865	0.34	Campholenal <alpha->
26	12.700	534434	0.07	Alloocimene + Unknown
27	12.961	4861140	0.65	Pinocarveol <trans->
28	13.122	3846328	0.51	Verbenol <trans->
29	13.250	1918821	0.26	Unknown
30	13.575	323695	0.04	Pinocamphone <trans->
31	13.630	348184	0.05	Pinocarvone
32	13.762	224202	0.03	Borneol
33	13.813	1845507	0.25	Mentha-1,5-dien-8-ol <para->
34	14.085	4519131	0.60	Terpinen-4-ol
35	14.507	1629624	0.22	Terpineol <alpha->
36	14.619	2242263	0.30	Myrtenal + Myrtenol
37	14.993	1988727	0.27	Verbenone
38	17.099	2885231	0.38	Bornyl acetate
39	18.531	117919	0.02	Elemene <delta->
40	18.840	917447	0.12	Terpinyl acetate <alpha->
41	19.603	387940	0.05	Copaene <alpha->
42	19.858	1193905	0.16	Bourbonene <beta->
43	20.004	4350613	0.58	Elemene <beta->
44	20.272	171330	0.02	Longifolene
45	20.435	95492	0.01	Caryophyllene <(Z)->
46	20.502	18713	0.00	Gurjunene <alpha->
47	20.775	3192979	0.43	Caryophyllene <(E)->
48	21.017	90043	0.01	Copaene <beta->
49	21.655	777785	0.10	Humulene <alpha->
50	21.841	327642	0.04	Alloaromadendrene
51	22.182	394332	0.05	Gurjunene <gamma->
52	22.344	275348	0.04	Muurolene <gamma->
53	22.407	263447	0.04	Chamigrene <beta->
54	22.492	3153868	0.42	Selinene <beta->
55	22.704	1277618	0.17	Selinene <alpha->
56	22.770	115499	0.02	Muurolene <alpha->
57	23.147	69469	0.01	Cadinene <gamma->
58	23.348	511143	0.07	Cadinene <delta->
59	25.126	316126	0.04	Caryophyllene oxide
60	25.860	57940	0.01	Humulene epoxide II
61	26.646	53381	0.01	T-Muurolol + Muurolol <alpha->
62	26.873	204996	0.03	Eudesmol <beta->
63	26.947	98231	0.01	Cadinol <alpha->
64	29.483	80573	0.01	Unknown
65	34.045	114387	0.02	Unknown
		750205527	100.00	

Kosmetiniai alergenai: *-silpnas, **-vidutinio stiprumo, ***- stiprus alergenai

Analiz atliko

dr. Jurga B dien