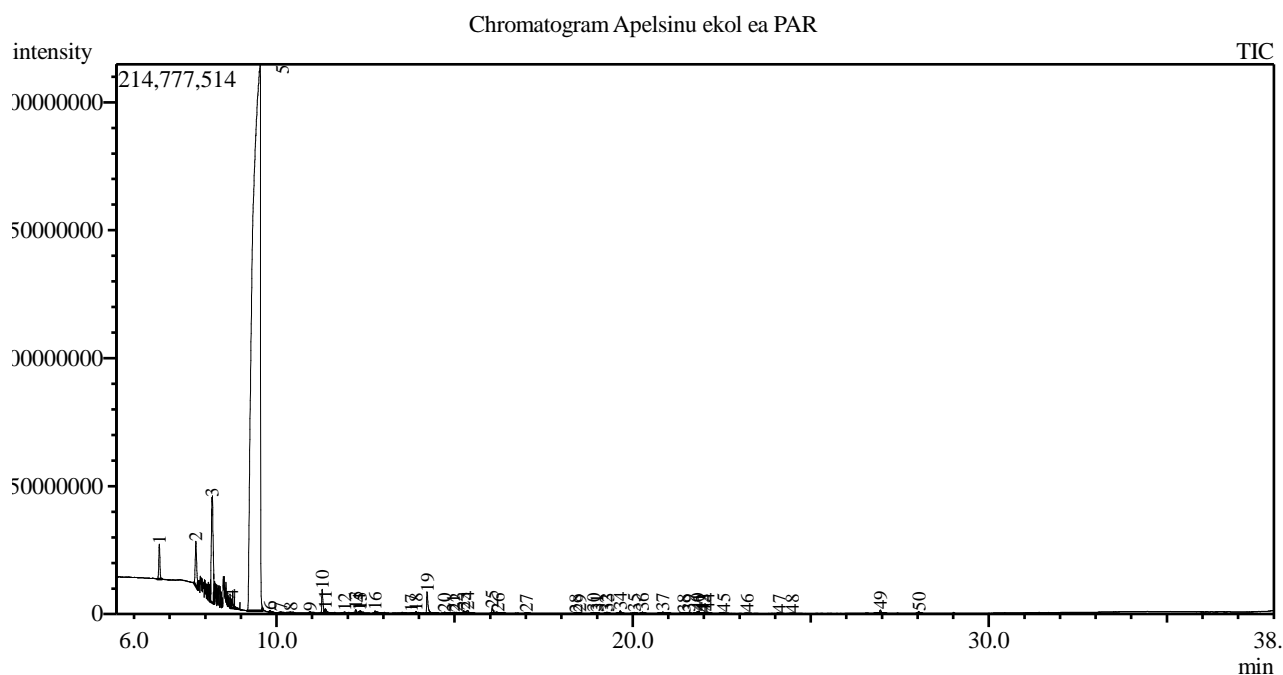


Analysis numb.: GC560
 Analysis date: 2018 05 23
 Sample name: Apelsin ekologiškas ea
 Botanical name: Citrus x sinensis (Sweet Orange)
 Sample batch num: ORGVO1017SO
 Sample origin: PAR
 Best before: 2019 10

Furanokumarin nerasta arba j kiekiai yra žemiau aptikimo ribos (ppm ribose)



Peak Report TIC

Peak#	R.Time	Area	Area%	Name
1	6.709	29873822	0.84	Pinene <alpha->
2	7.734	51387835	1.45	Sabinene
3	8.188	150692370	4.25	Myrcene
4	8.738	11292914	0.32	Carene <delta-3->
5	9.542	3179976419	89.64	Limonene*
6	9.816	1436725	0.04	Ocimene <trans-, beta->
7	10.119	782449	0.02	Terpinene <gamma->
8	10.390	1972447	0.06	Sabinene hydrate <cis->
9	10.942	1603105	0.05	Terpinolene
10	11.284	22637138	0.64	Linalool*
11	11.375	7339068	0.21	Nonanal
12	11.909	1890608	0.05	Mentha-2,8-dien-1-ol <trans-, para->
13	12.226	3944255	0.11	Limonene oxide <cis->
14	12.323	402525	0.01	Mentha-2,8-dien-1-ol <cis-, para->
15	12.352	2332802	0.07	Limonene oxide <trans->
16	12.766	5592751	0.16	Citronellal
17	13.791	95906	0.00	Cryptone
18	13.917	1878087	0.05	Terpineol <alpha->
19	14.229	23425343	0.66	Decanal <n->
20	14.719	1994111	0.06	Carveol <trans->
21	14.972	392083	0.01	Citronellol*
22	15.054	1770740	0.05	Carveol <cis->
23	15.252	3098846	0.09	Neral
24	15.363	4693513	0.13	Carvone

Peak#	R.Time	Area	Area%	Name
25	16.056	6487815	0.18	Geranial
26	16.215	1907054	0.05	Perillaldehyde
27	17.022	730555	0.02	Undecanal
28	18.410	156245	0.00	Eugenol**
29	18.507	378873	0.01	Neryl acetate
30	18.904	1229671	0.03	Copaene <alpha->
31	19.000	269875	0.01	Geranyl acetate
32	19.254	473341	0.01	Cubebene <beta->
33	19.302	1122525	0.03	Elemene <beta->
34	19.652	3194552	0.09	Dodecanal
35	20.043	1061499	0.03	Caryophyllene <(E)->
36	20.276	1363714	0.04	Copaene <beta->
37	20.847	2489664	0.07	Farnesene <(E)-, beta->
38	21.438	267759	0.01	Muurolene <gamma->
39	21.575	759863	0.02	Germacrene D
40	21.819	2277431	0.06	Valencene
41	21.865	1769166	0.05	Valencene
42	21.963	371854	0.01	Bicyclogermacrene
43	22.010	196429	0.01	Muurolene <alpha->
44	22.114	1708796	0.05	Farnesene <(E,E)-, alpha->
45	22.555	1457794	0.04	Cadinene <delta->
46	23.211	525780	0.01	Elemol <alpha->
47	24.120	288188	0.01	Caryophyllene oxide
48	24.485	396916	0.01	Carotol
49	26.957	4080287	0.12	Sinensal <beta->
50	28.033	1921130	0.05	Sinensal <alpha->
		3547392638	100.00	

Kosmetiniai alergenai: *-silpnas, **-vidutinio stiprumo, ***- stiprus alergenai

Analiz atliko

dr. Jurga B dien